

LANNA

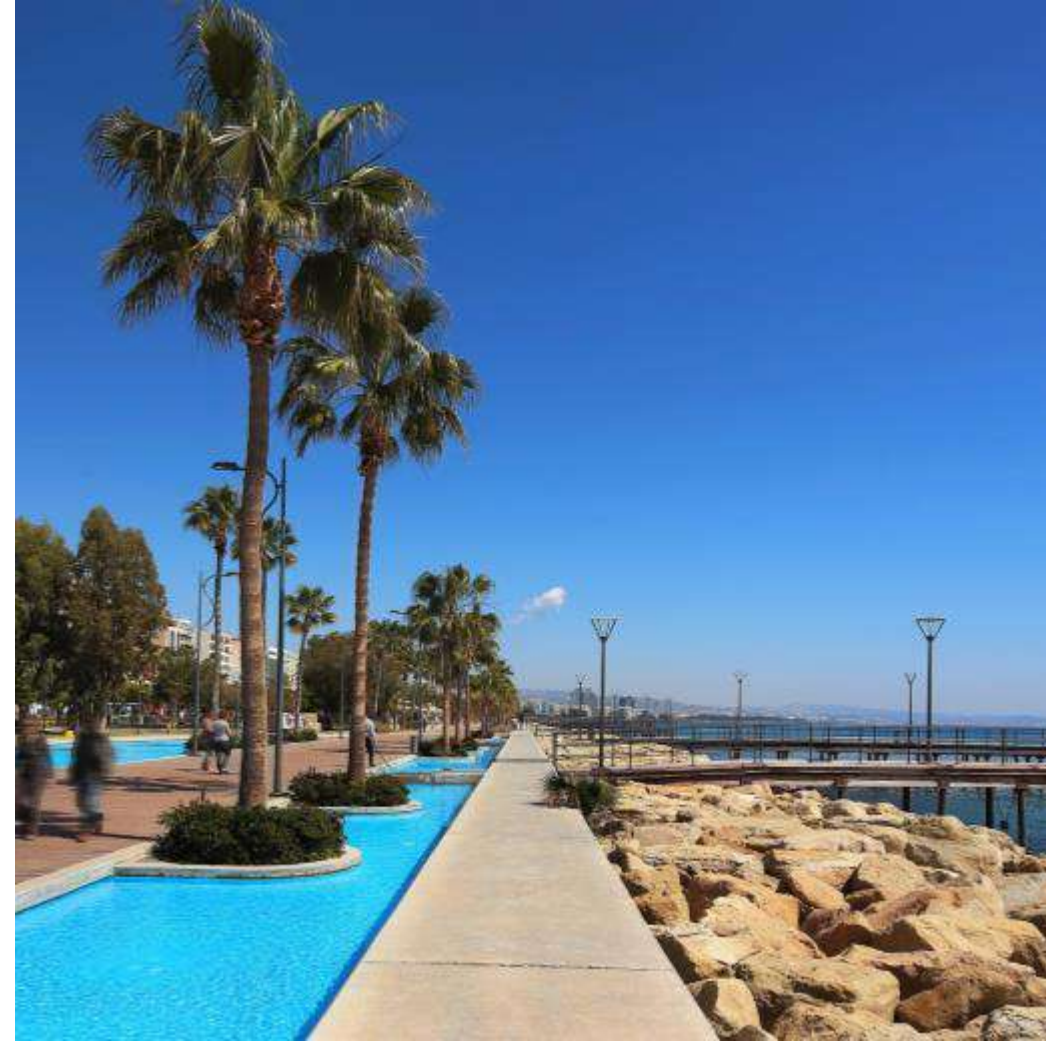
VILLAS



LIMASSOL

THE CITY OF CHOICE

Limassol is Cyprus' cosmopolitan capital, its most important business district and a vibrant modern playground. It is consistently ranked as one of the world's leading cities for quality of life. Nowhere in Cyprus is there a richer mix of modern culture and fascinating heritage.



Limassol's enchanting promenade is situated on the prime seafront boulevard. It is the ideal place for walking, jogging, spending time on the beach or taking time for peaceful contemplation under the shade of a mature palm tree.



Vibrant Limassol

The city offers an active, vibrant and varied choice of restaurants, stylish cafes, bars and chic lounges.





A MIX OF FINE AND CASUAL DINNING

An Adventure in Taste

Limassol's gastronomic scene comprises a delicious mix of fine and casual dining. It offers a great selection of cuisines as well as local traditional food.

Private Schools

There are a number of private schools (Greek, English, French, and Russian) available in Limassol.



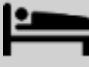




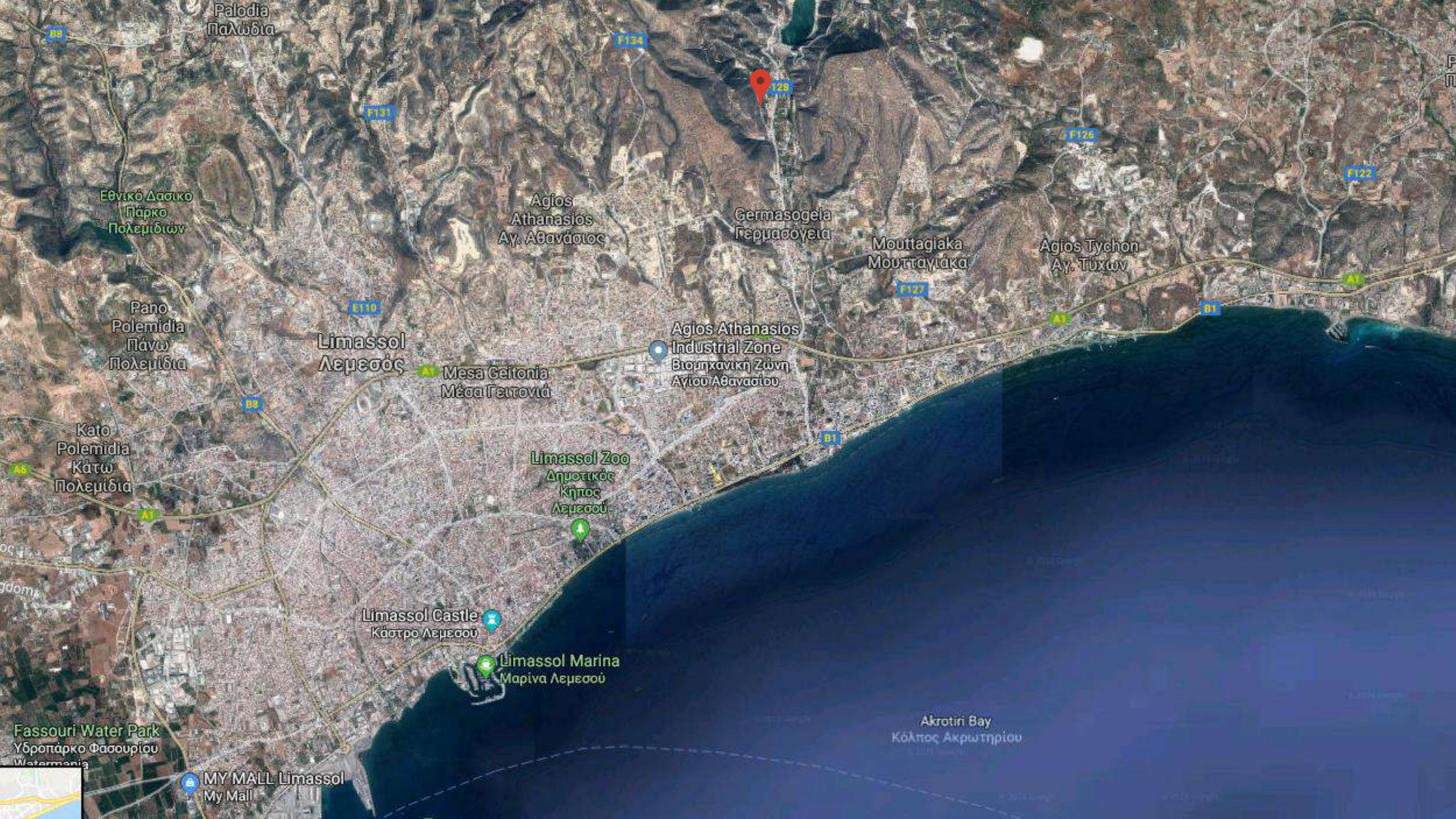
LANA
VILLAS

PLACES OF INTEREST

- 1. Limassol Castle
- 2. City Hall
- 3. Promenade
- 4. Historical Centre
- 5. St Raphael Marina

-  Private Schools
-  Supermarkets
-  5 star hotels

Paphos Airport 71 km
Larnaca Airport 62.3 km



Ραλόδια
Παλόδια

89

F134

F131

F126

F122

Εθνικό Δασικό
Πάρκο
Πολεμιδίων

Agios
Athanasios
Αγ. Αθανάσιος

Germasogeia
Γερμασόγεια

Μουτταγιάκα
Μουτταγιάκα

Agios Tychon
Αγ. Τύχων

Ραπο
Ρολεμιά
Πάνω
Πολεμιά

Limassol
Λεμεσός

Mesa Geitonia
Μέσα Γειτονιά

Agios Athanasios
Industrial Zone
Βιομηχανική Ζώνη
Αγίου Αθανασίου

Κατο
Ρολεμιά
Κάτω
Πολεμιά

Limassol Zoo
Δημοτικός
Κήπος
Λεμεσού

Limassol Castle
Κάστρο Λεμεσού

Limassol Marina
Μαρίνα Λεμεσού

Fassouri Water Park
Υδροπάρκο Φασουρίου
Watermania

MY MALL Limassol
My Mall

Akrotiri Bay
Κόλπος Ακρωτηρίου

A Five Star Location

Lana Villas is located minutes away from all Limassol's 5-star hotels.



Four Seasons Hotel



Amathus Beach Hotel



Grand Resort



Amara Hotel



Parklane Resort

Amenities

AMENITIES NEAR LANA VILLAS



Bakery 4 km



Convenience store 2.8 km



Private English School 5 km



Private Hospital 7 km



Pharmacy 2.8 km



Petrol Station 4.2 km



Tavern 2.4 km



Bank 4 km

Views from the plot



Views from the plot





CAFES & BARS

Just 4 km away from a wide selection of chic cafes and beach bars.



MARINA

Just 10 km away Saint Raphael Marina offers 237 berth marina with all amenities, accommodating boats up to 30m.

SANDY BEACHES

A selection of sandy beaches are within 5 km away.



Located in desirable hills of Limassol, Lana Villas comprises 6 luxuriously appointed 3-bedroom residences, which harmoniously blend with their natural surroundings. Lana Villas are within a short drive of award-winning sandy beaches, close to a plethora of shops, restaurants and other amenities, yet offer a serene environment and tranquillity.



Villas 5 & 6

View from Villas 1.2, 3, 4



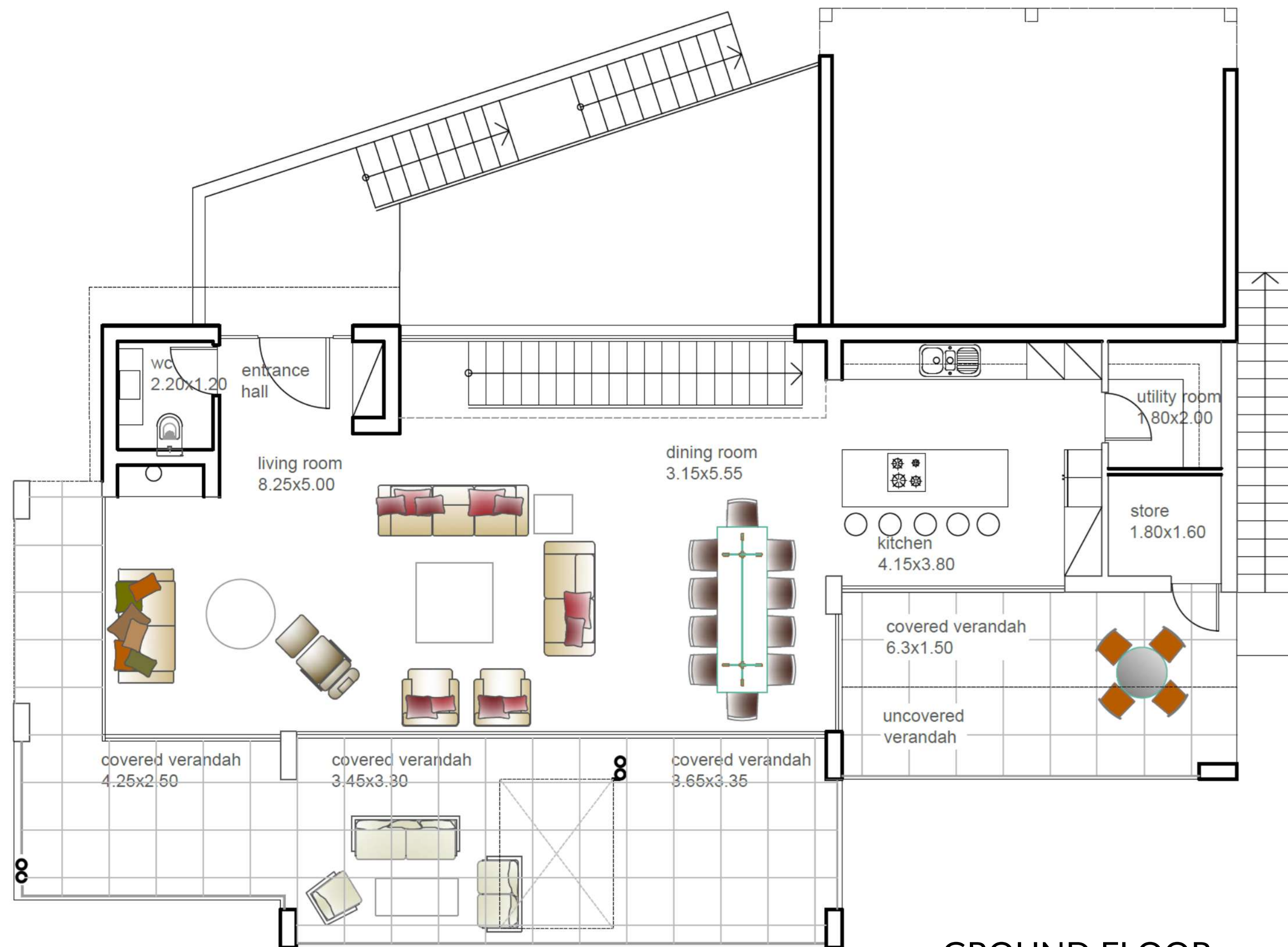
View from Villas 1.2, 3, 4



SITE PLAN



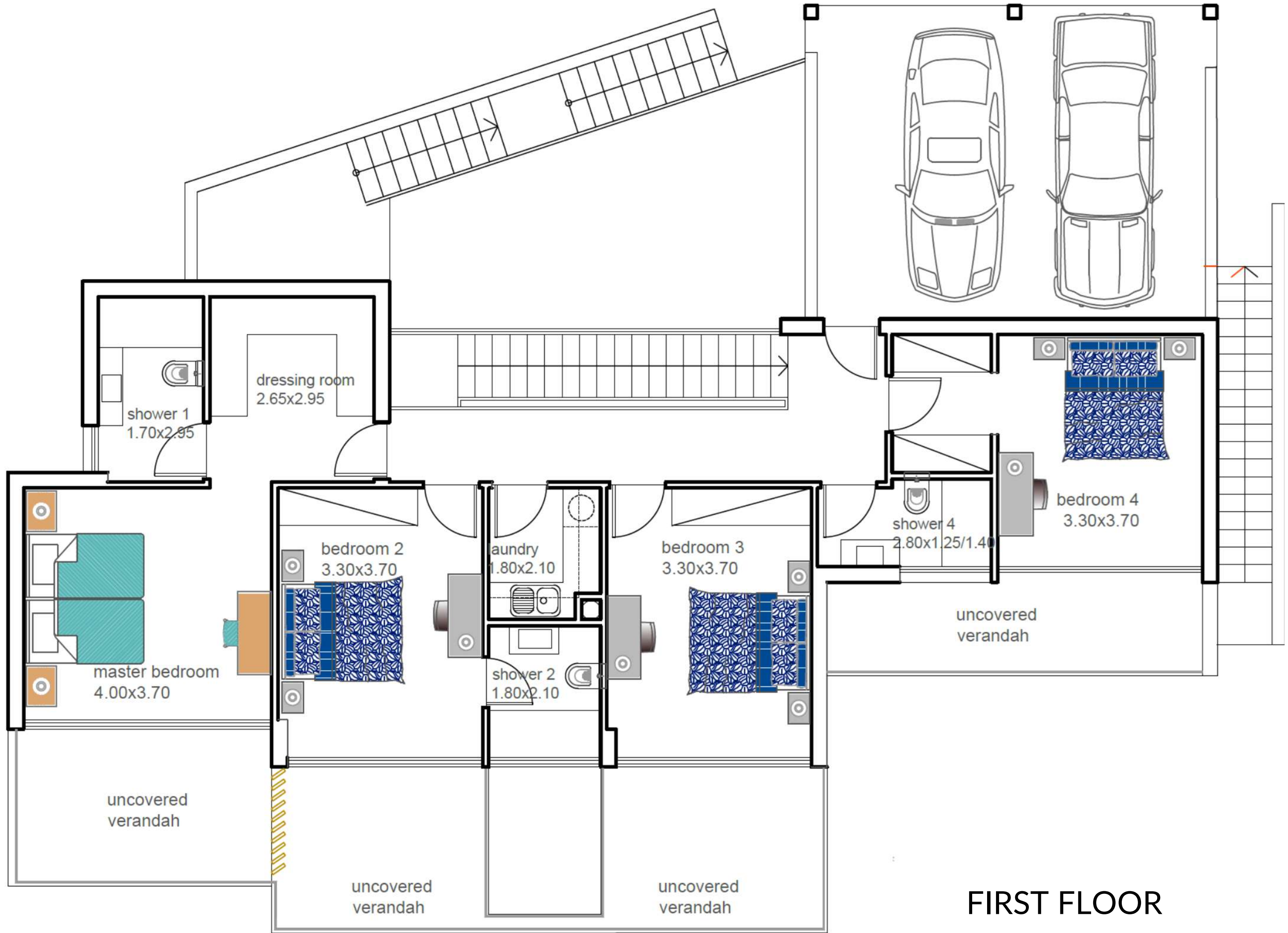
FLOOR PLANS – VILLA 1.2



GROUND FLOOR

- Bedrooms | 4
- Bath | 4 (2 en suite)
- Covered Area m² | 220
- Covered Veranda m² | 50
- Total Covered Area m² | 270
- Uncovered Veranda m² | 52
- Plot m²: 890
- Garden: Yes

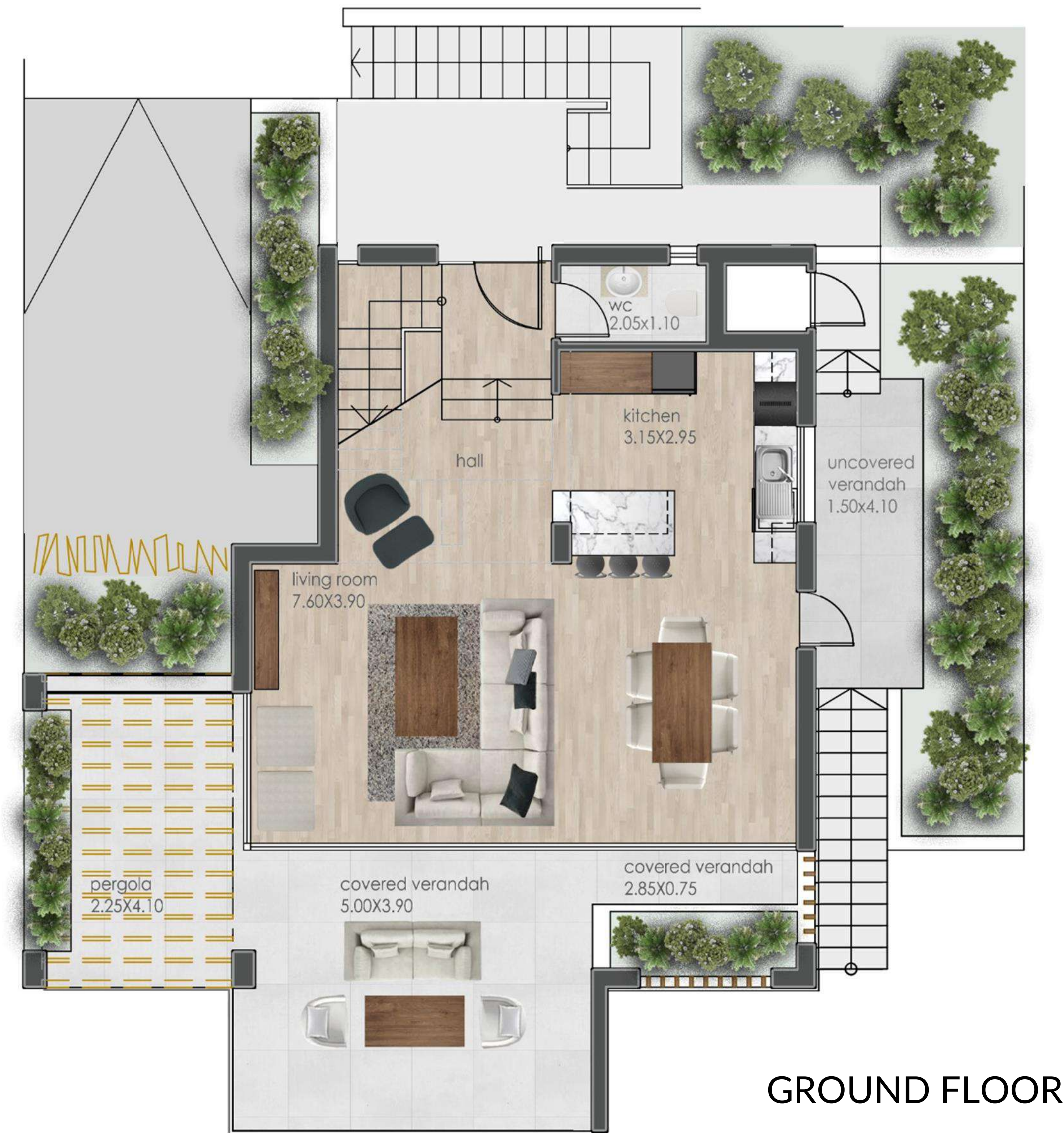
FLOOR PLANS – VILLA 1.2





Villa 3

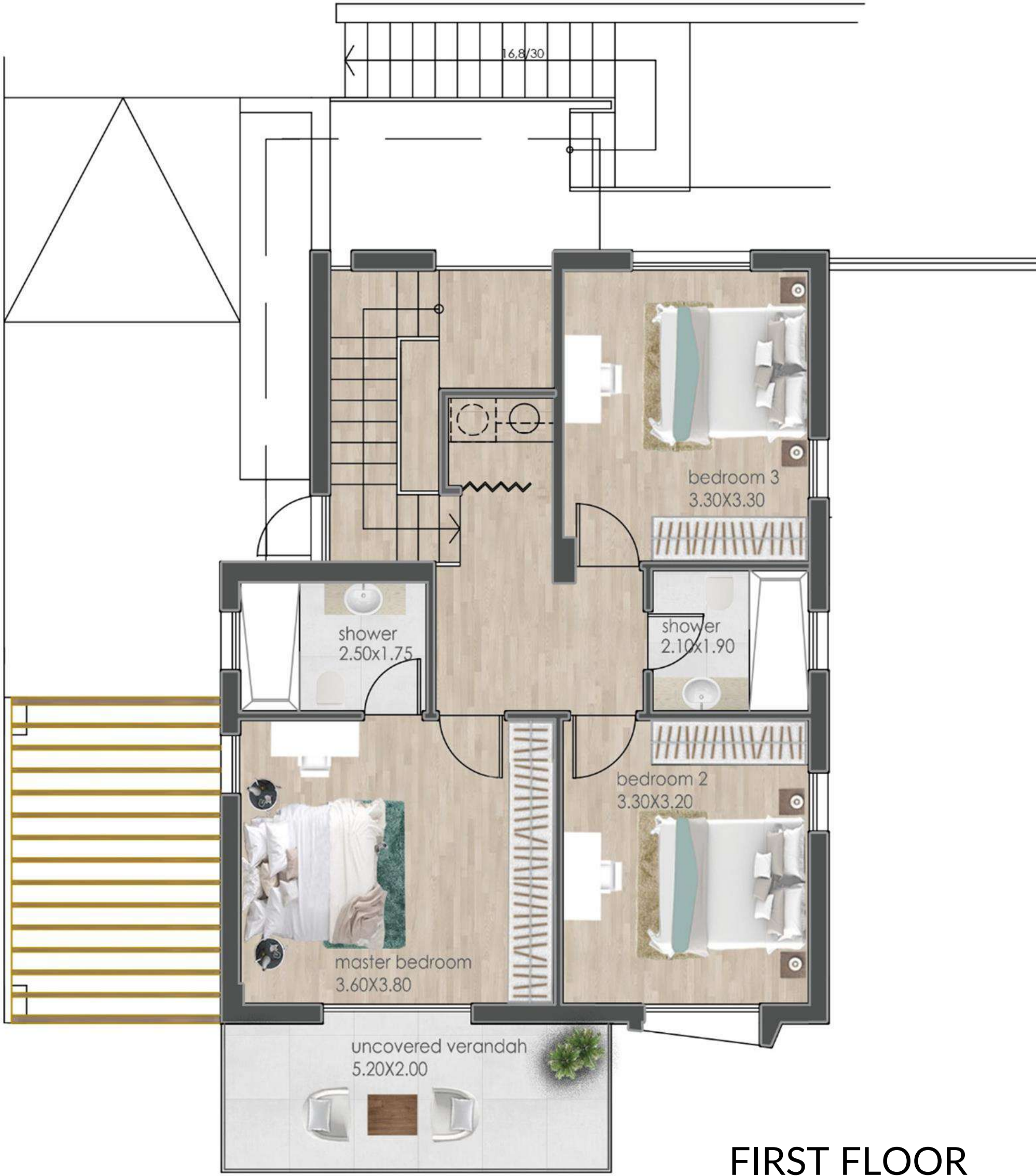
FLOOR PLANS – VILLA 3



GROUND FLOOR

- Bedrooms | 3
- Bath | 1 (1 en suite)
- Covered Area m² | 136.00
- Covered Veranda m² | 22.00
- Total Covered Area m² | 158.00
- Uncovered Veranda m² | 29.00
- Plot m²: 380.00
- Garden: Yes

FLOOR PLANS – VILLA 3



FIRST FLOOR



Villa 3



Villa 3



Villa 3



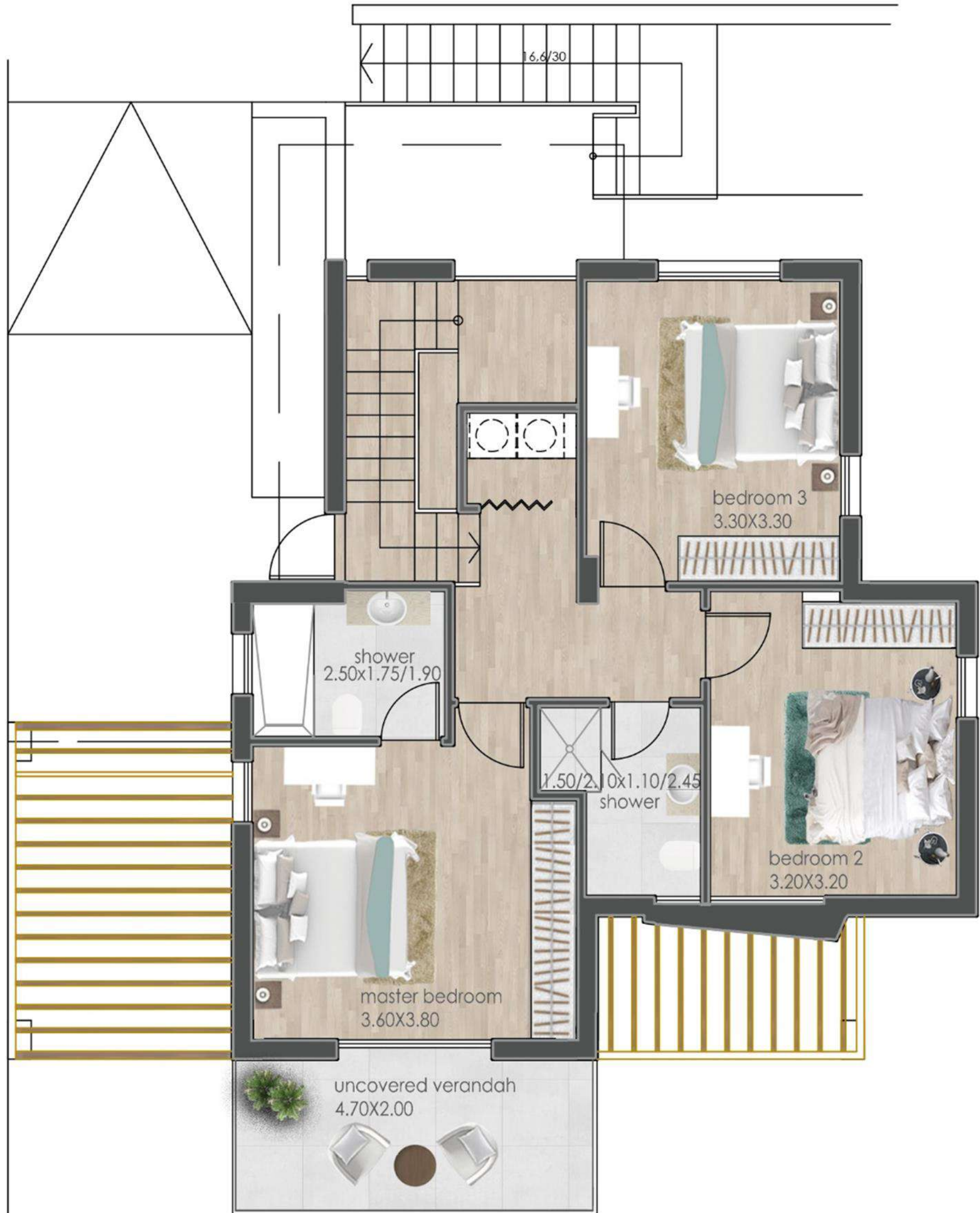
Villa 3

FLOOR PLANS – VILLA 4



Bedrooms | 3
Bath | 1 (1 en suite)
Covered Area m² | 136.00
Covered Veranda m² | 23.00
Total Covered Area m² | 159.00
Uncovered Veranda m² | 22.00
Plot m² : 380.00
Garden: Yes

FLOOR PLANS – VILLA 4



FIRST FLOOR



Villas 5 & 6

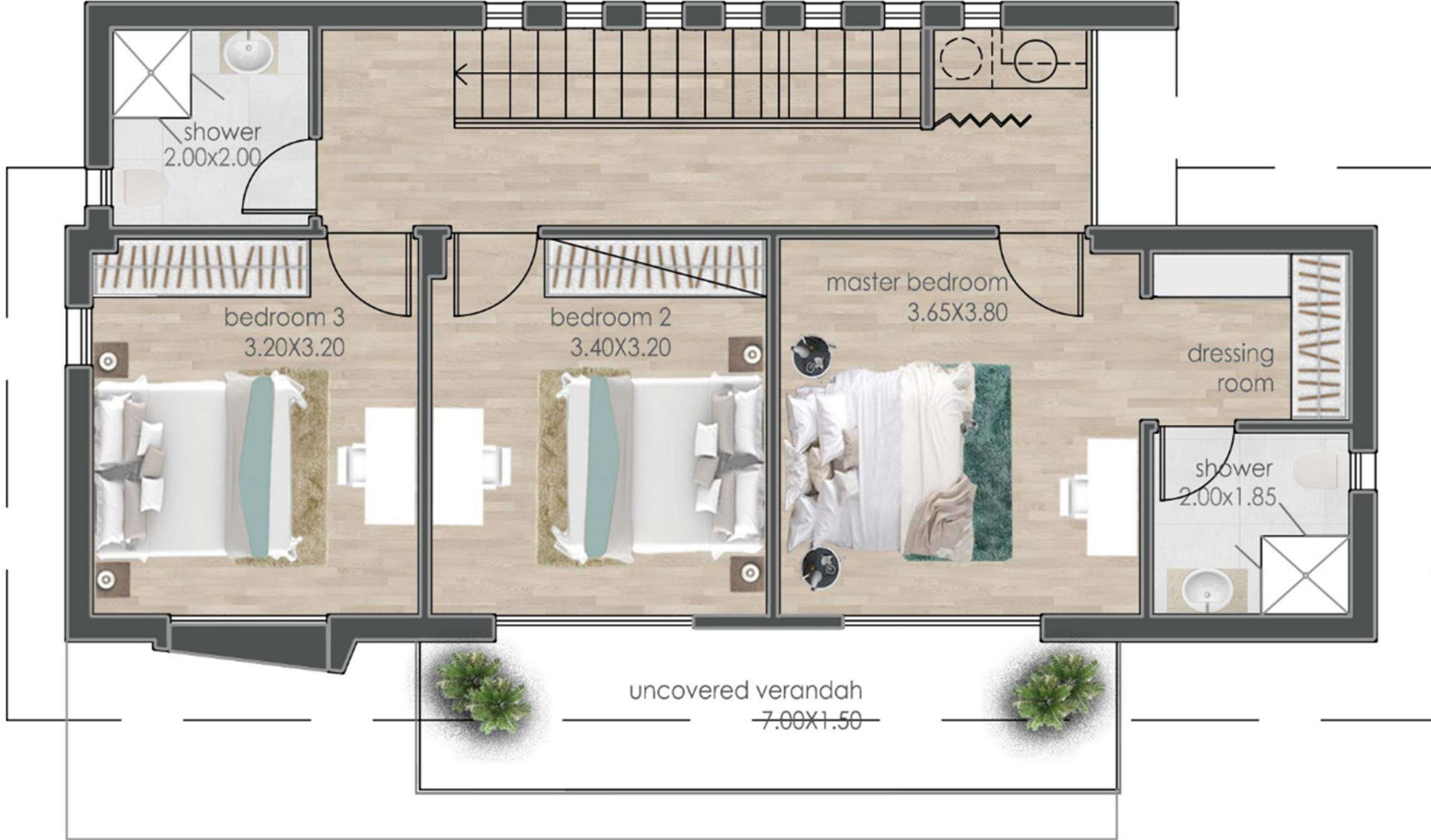
FLOOR PLANS – VILLAS 5, 6, 7



GROUND FLOOR

- Bedrooms | 3
- Bath | 1 (1 en suite)
- Covered Area m² | 136.00
- Covered Veranda m² | 20.00
- Total Covered Area m² | 157.00
- Uncovered Veranda m² | 20.00
- Plot V5 m² : 310.00
- Plot V6 m² : 330.00
- Plot V7 m² : 570.00
- Garden: Yes

FLOOR PLANS – VILLAS 5, 6, 7



FIRST FLOOR



Villas 5, 6, 7



Villas 5, 6, 7

Villas 5, 6, 7





Villas 5, 6, 7



Villas 5, 6, 7



Value adding services

Property management

Rentals

Resales

Cleaning

Maintenance & repairs

Landscaping & gardening

LANNA

VILLAS

The contents and information contained in this document is intended for general marketing purposes only and must not be construed as advice, or being complete and accurate nor be relied upon as such. The photographs of the surrounding views and location may have been digitally enhanced or altered and do not represent actual views or surrounding views. These photographs and CGIs are indicative only. Fittings and finishes are subject to availability and company's discretion. Prospective purchasers should make and must rely on their own enquiries. This brochure is a guide only and does not constitute an offer or contract. Neither the company nor any of its directors or employees give any representation or warranty as to the reliability of the information contained herein, and shall not be responsible and disclaim all loss, liability or expense of any nature whatsoever which may be attributable (directly, indirectly or consequentially) to the use of the information provided.