

enscape

LIMASSOL

enscape

LIMASSOL

UNPARALLELED DESIGN IN A SUPERB CITY LOCATION

3 RESIDENCES | 7 VILLAS | 6 TOWNHOUSES

Enscape is the latest project by Pafilia, the leading luxury property developer in Cyprus. This contemporary project is unparalleled in its location, design and finishes, meeting the needs of discerning clients who want to live a harmonious lifestyle, with easy access to the city amenities.






AGIOS TYCHONAS

This affluent area of Limassol is located two and a half kilometers from the coast. From its elevated position, there are magnificent views of the coast line and Mediterranean sea. The area has many local restaurants, supermarkets, playgrounds, banks and all amenities required to live a convenient life. There are also several blue flag beaches and a six-mile long coastal path, offering tranquility and beauty. It's a great location thanks to the close proximity to the highway, city centre and international airports of Paphos and Larnaca.





enscape
LIMASSOL

-  5 star hotels
-  Private Schools
-  Supermarkets

PLACES OF INTEREST

1. Limassol Castle
2. Limassol Marina
3. Old Port
4. Cathedral
5. City Hall
6. Saint Raphael Marina

Paphos Airport 65 km
Larnaca Airport 62 km

AMENITIES

AMENITIES NEAR ENSCAPE



Bakery 2.4 km



Supermarket 2km



Private English School 11.4km



Private Hospital 9.9km



Pharmacy 1.6 km



Petrol Station 2 km



Athlisis Sporting Centre 450m



Tavern 1km



CAFES & BARS

Just 1.5km away from a wide selection of chic cafes and beach bars.



SANDY BEACHES

A selection of sandy beaches are within 1.5km away.



MARINA

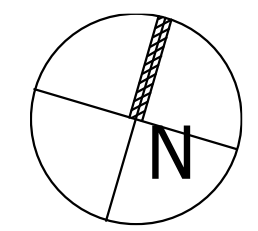
Just 3.7km away Saint Raphael Marina offers 237 berth marina with all amenities, accommodating boats up to 30m.



enscape

LIMASSOL

MASTERPLAN



RESIDENCE
V1 | 1-3



RESIDENCE
V1 | 1-3



RESIDENCE

V1 | 1-3



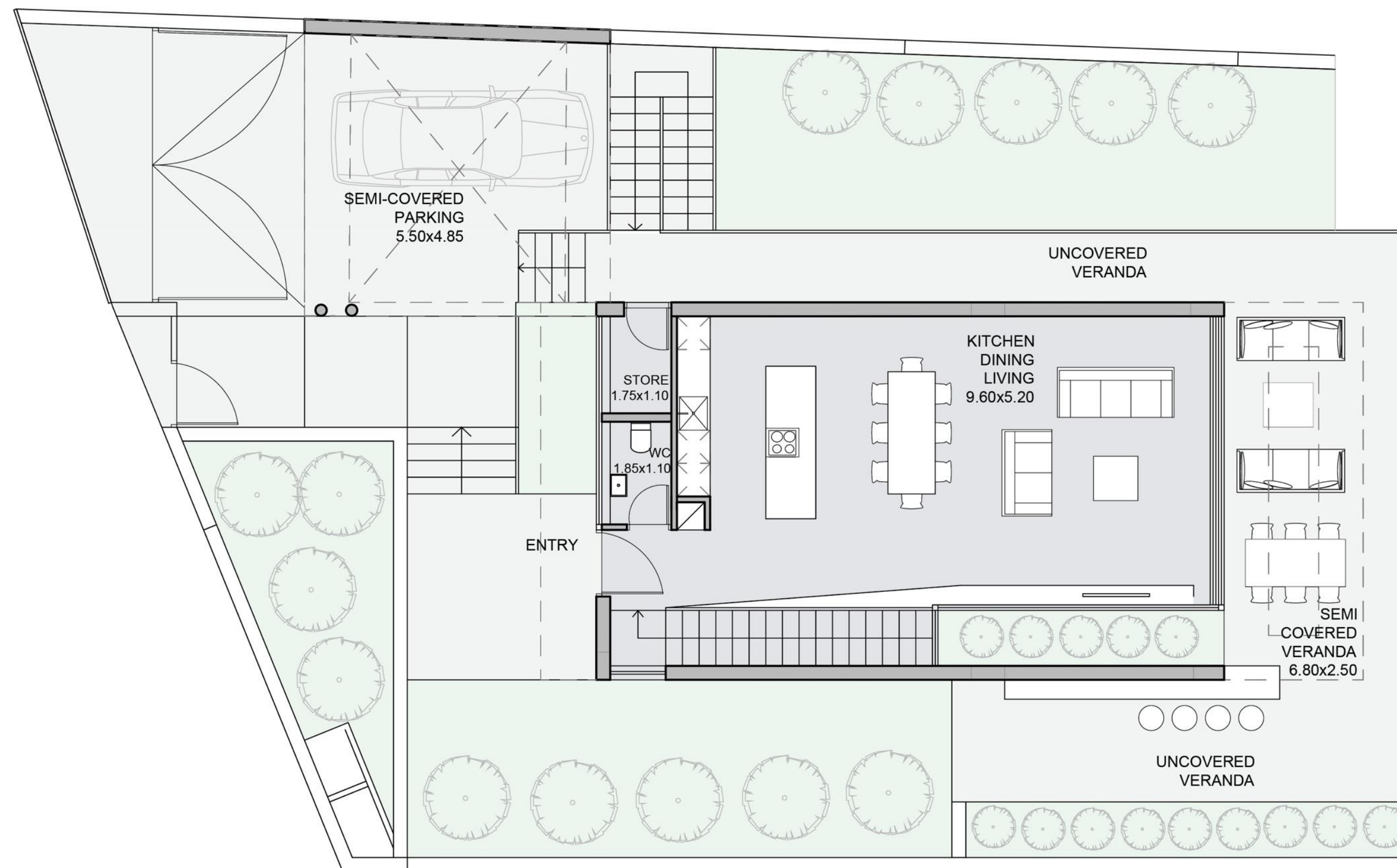
RESIDENCES

V1 | 1-3

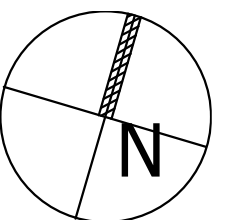


FLOOR PLAN

Residence V1.1 | 3 Bedrooms | 199sqm

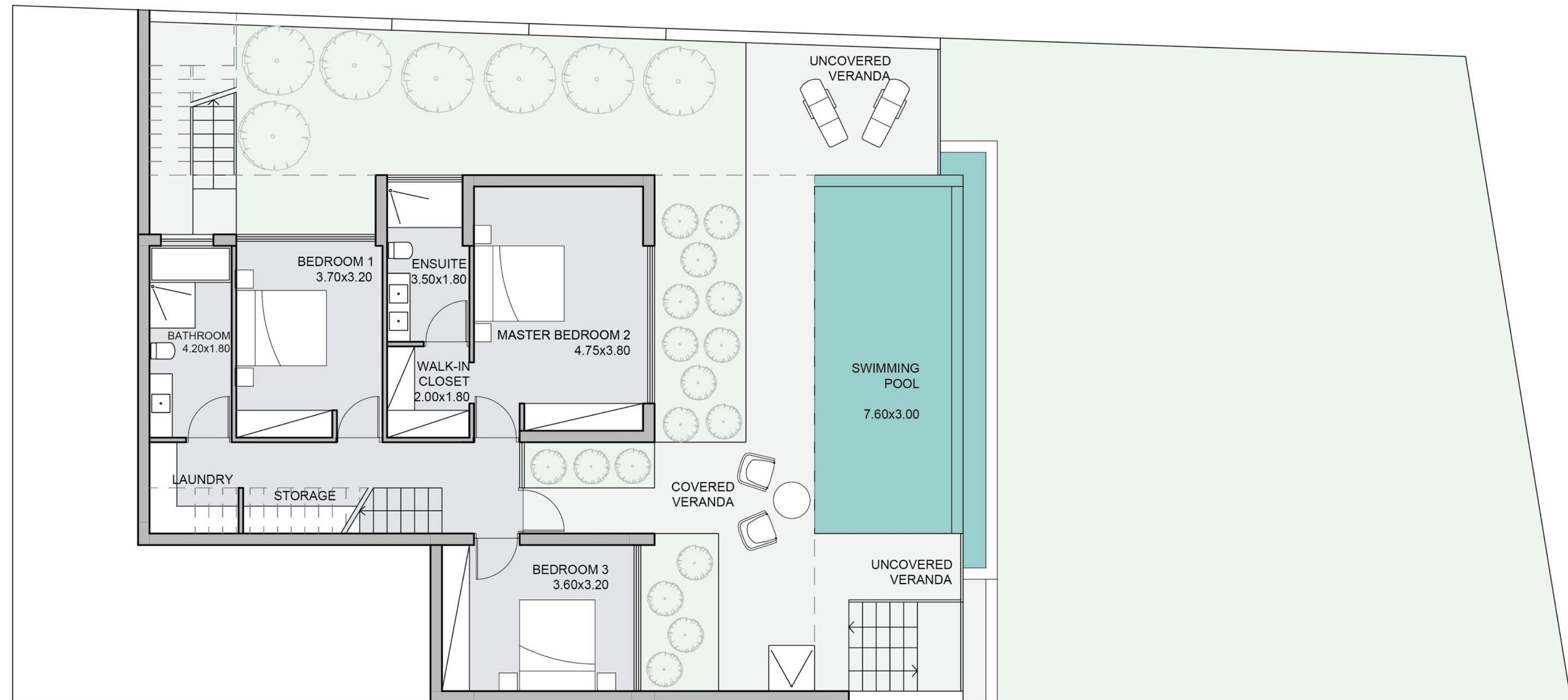


First floor

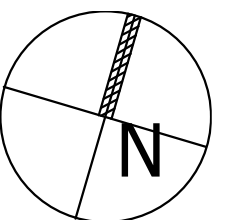


FLOOR PLAN

Residence V1.1 | 3 Bedrooms | 199sqm

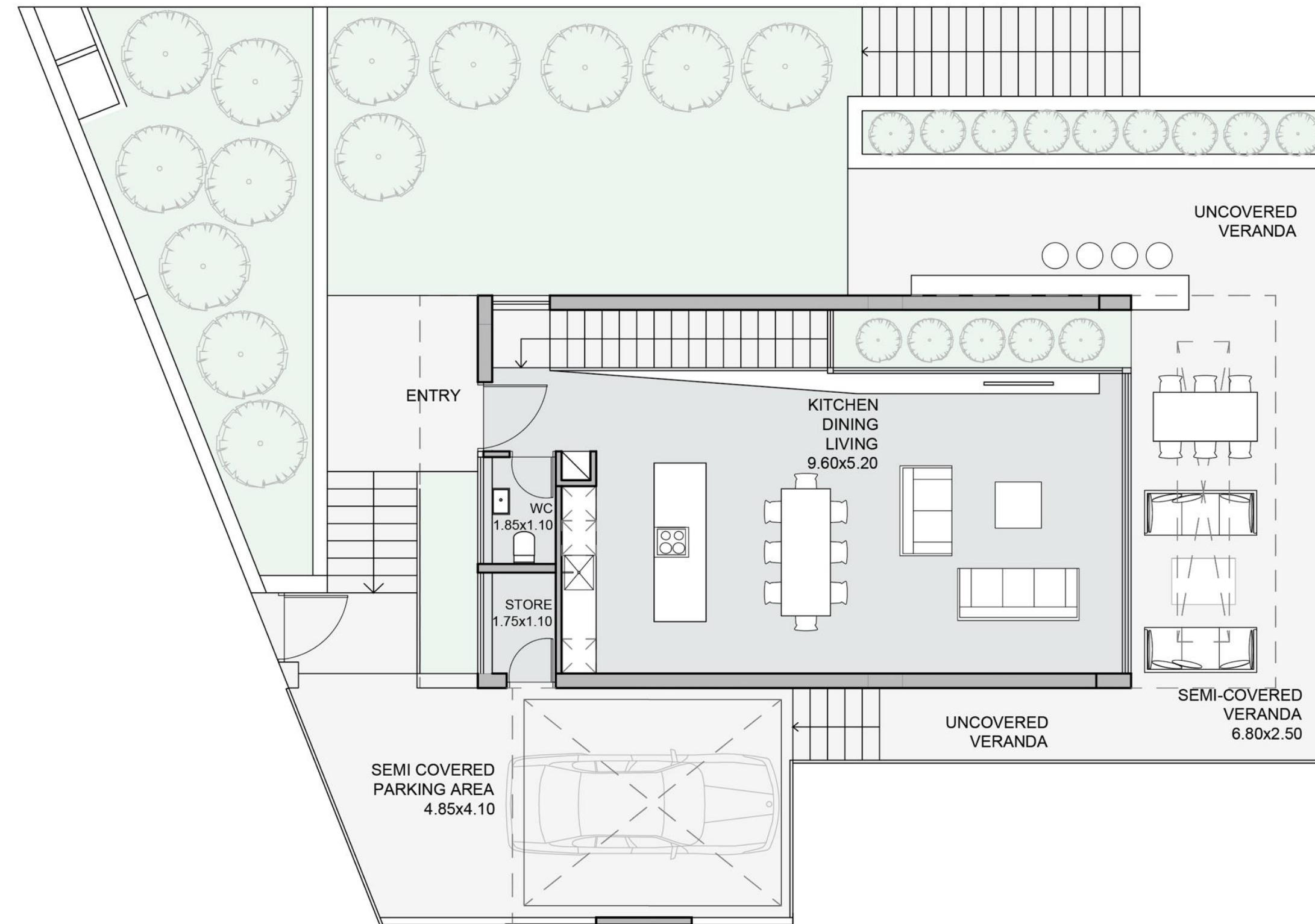


Ground floor

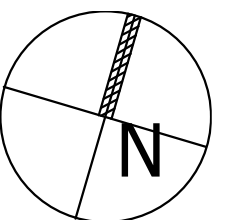


FLOOR PLAN

Residence V1.2 | 3 Bedrooms | 200sqm

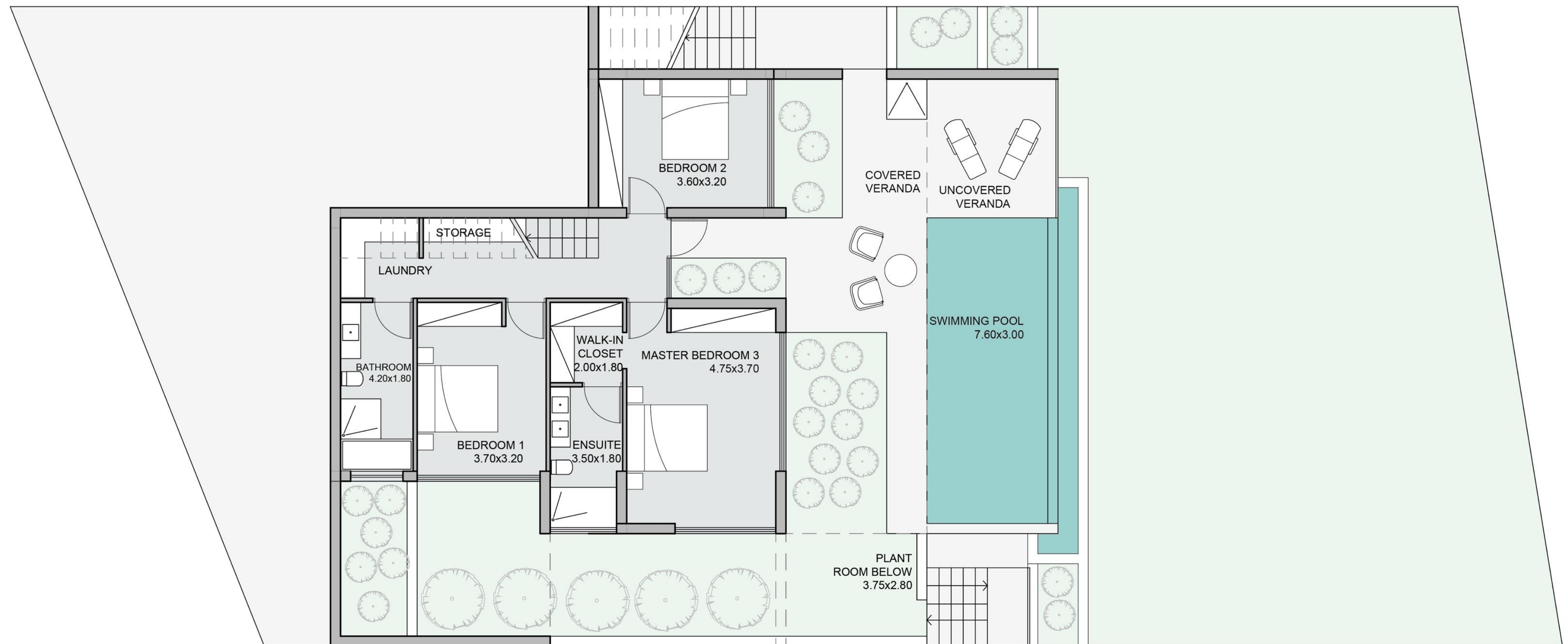


First floor

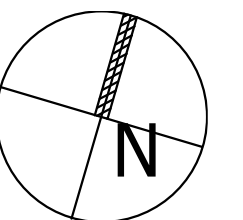


FLOOR PLAN

Residence V1.2 | 3 Bedrooms | 200sqm

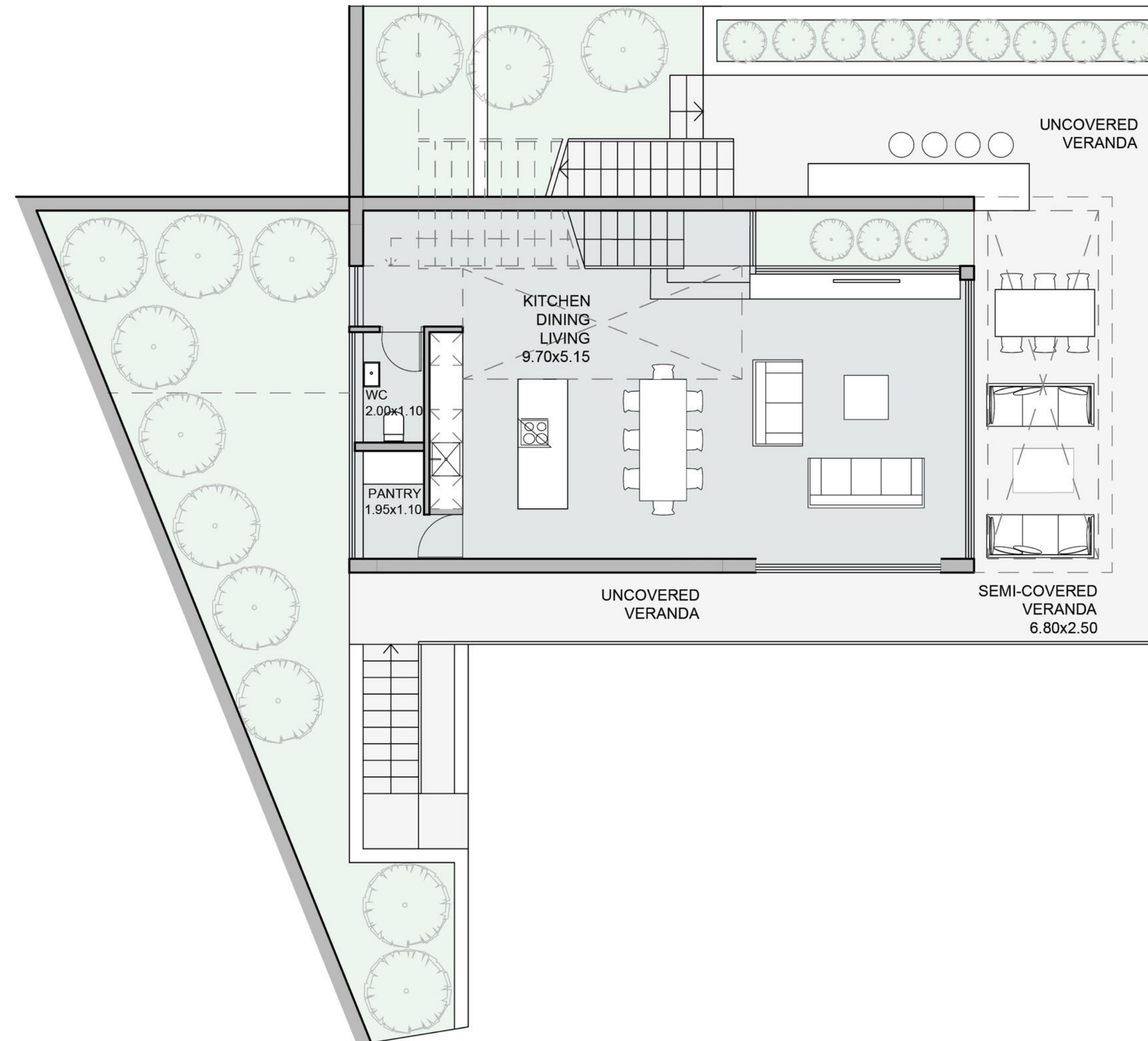


Ground floor

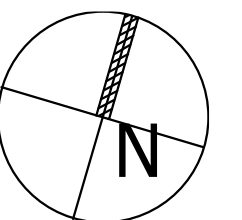


FLOOR PLAN

Residence V1.3 | 3 Bedrooms | 206sqm



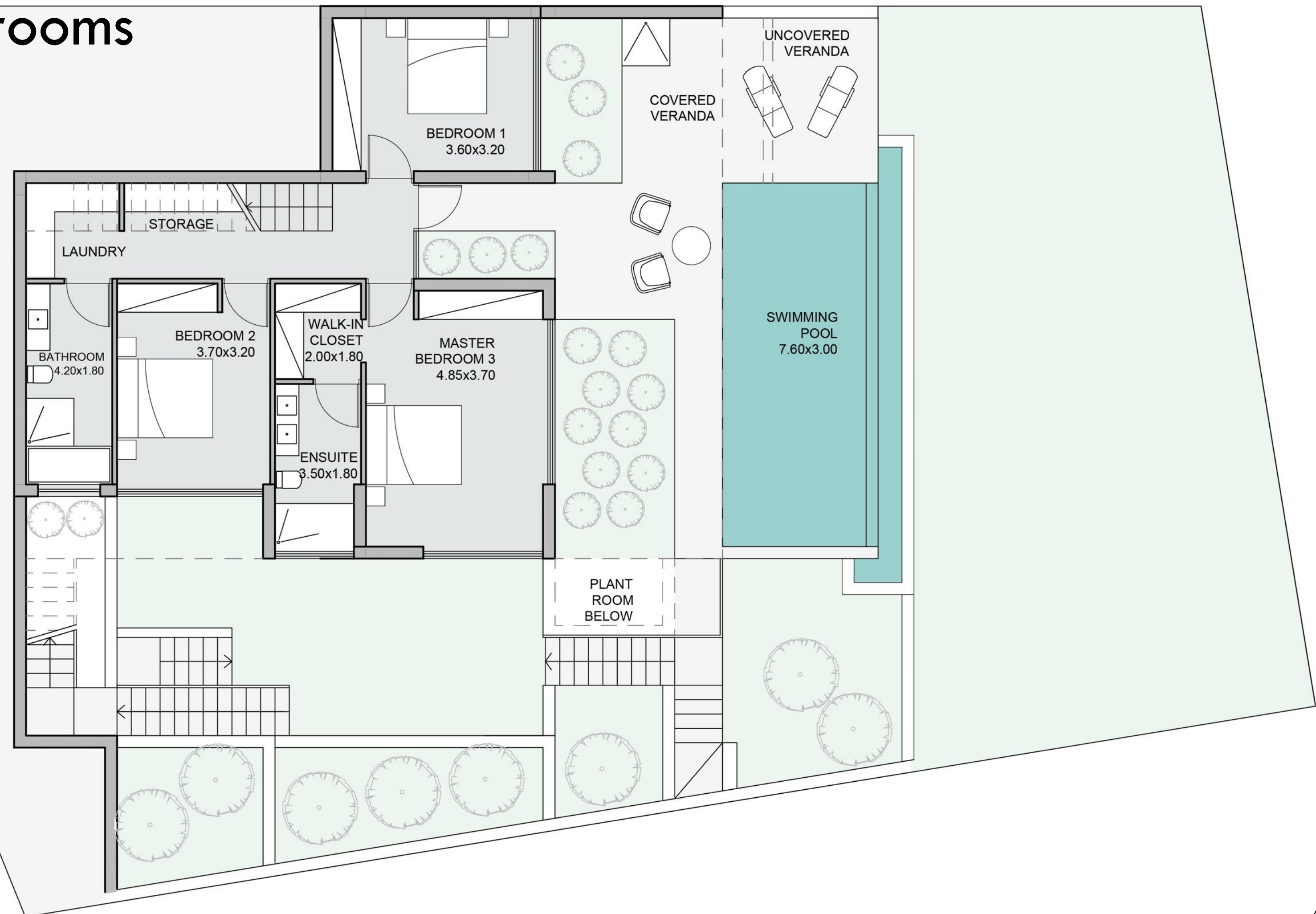
First floor



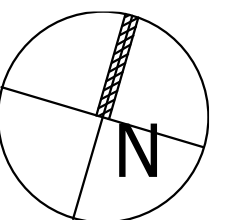
FLOOR PLAN

Residence V1.3 | 3 Bedrooms

206sqm

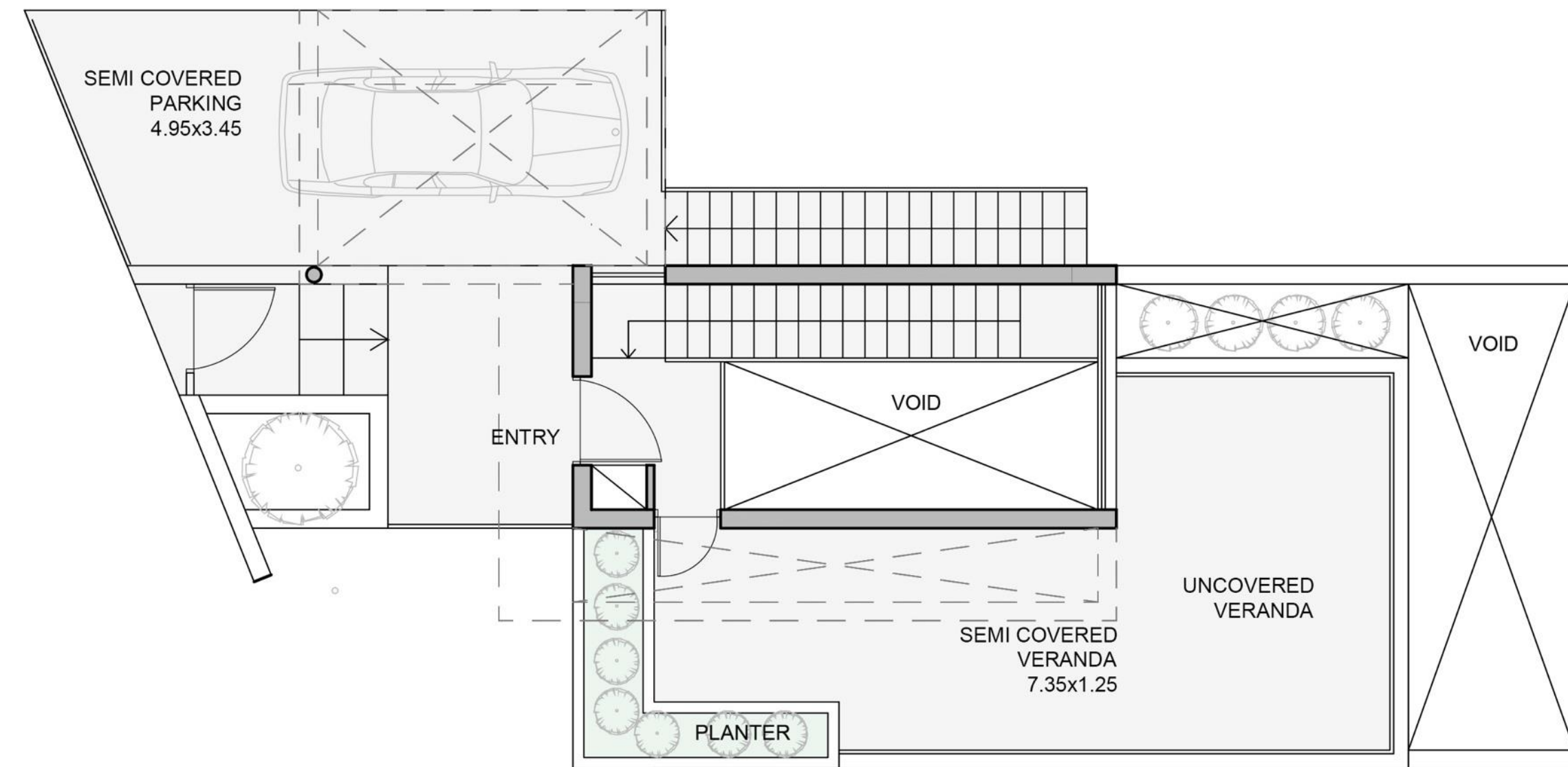


Ground floor



FLOOR PLAN

Residence V1.3 | 3 Bedrooms | 206sqm



Roof floor

VILLAS
V2 | 1-4



V2-2 —

VILLAS
V2 | 1-4



VILLAS
V2 | 1-4

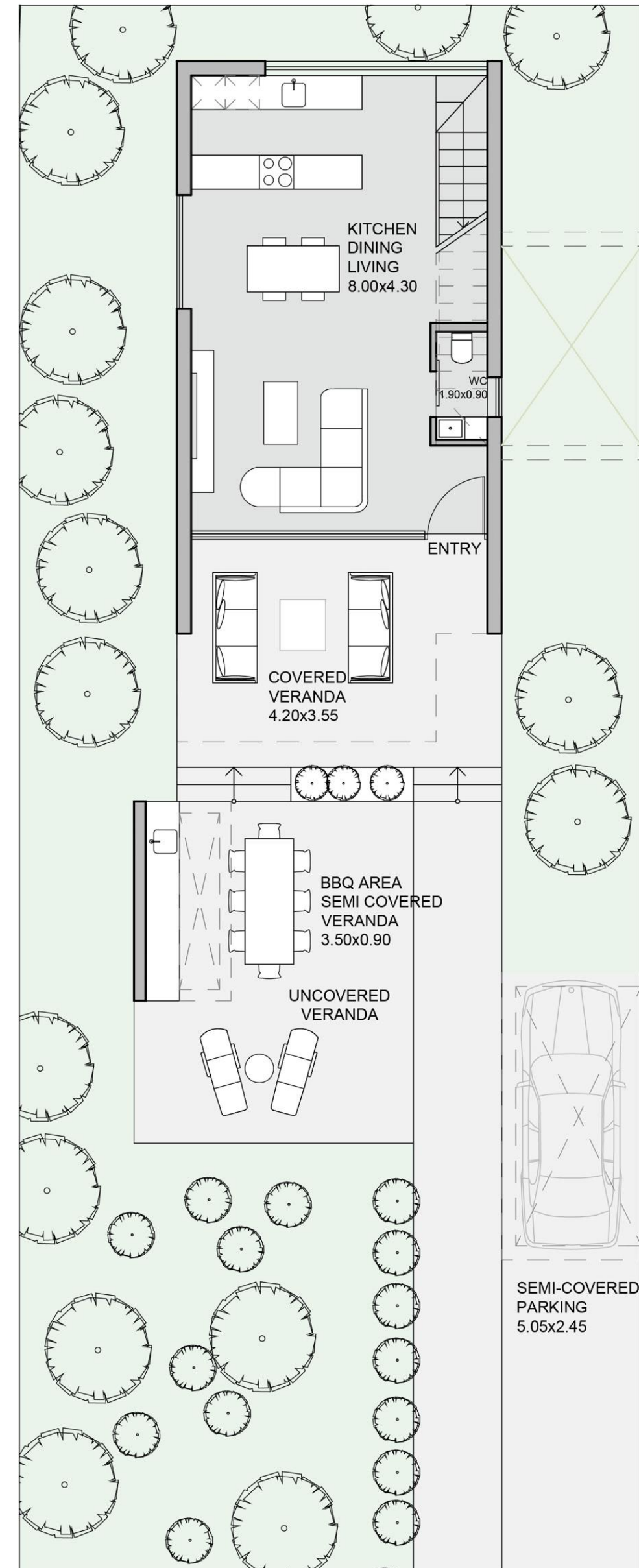


— V2-1

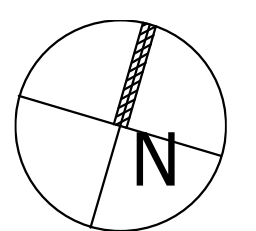
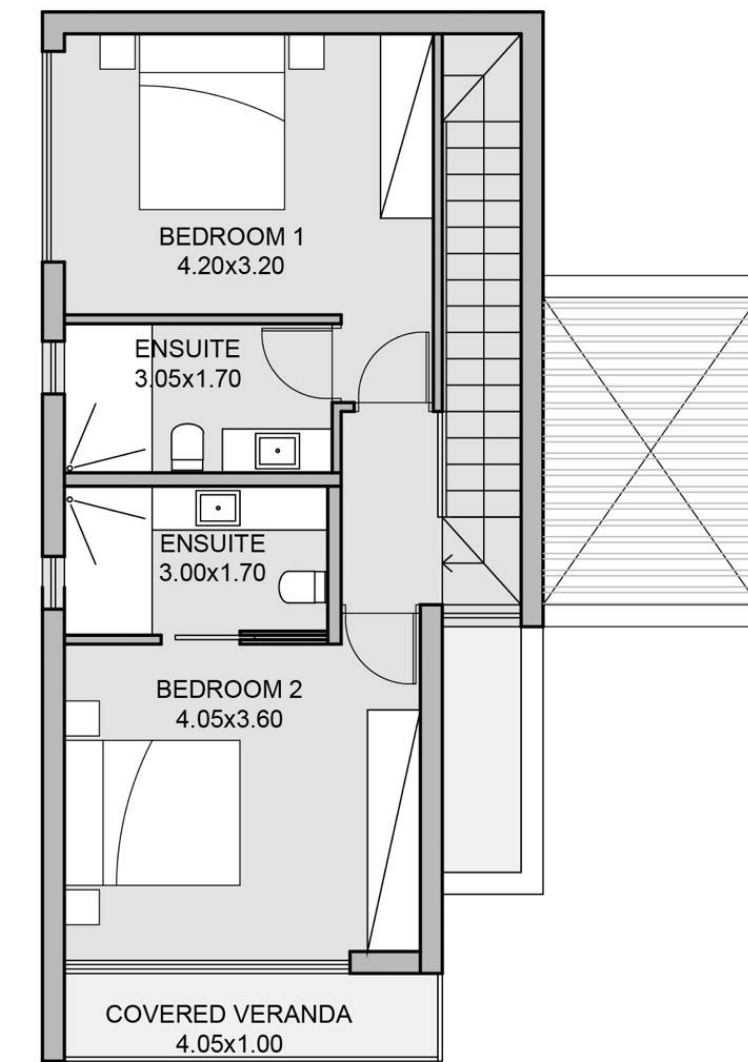
FLOOR PLAN

Villa V2.1 | 2 Bedrooms | 129sqm

Ground floor



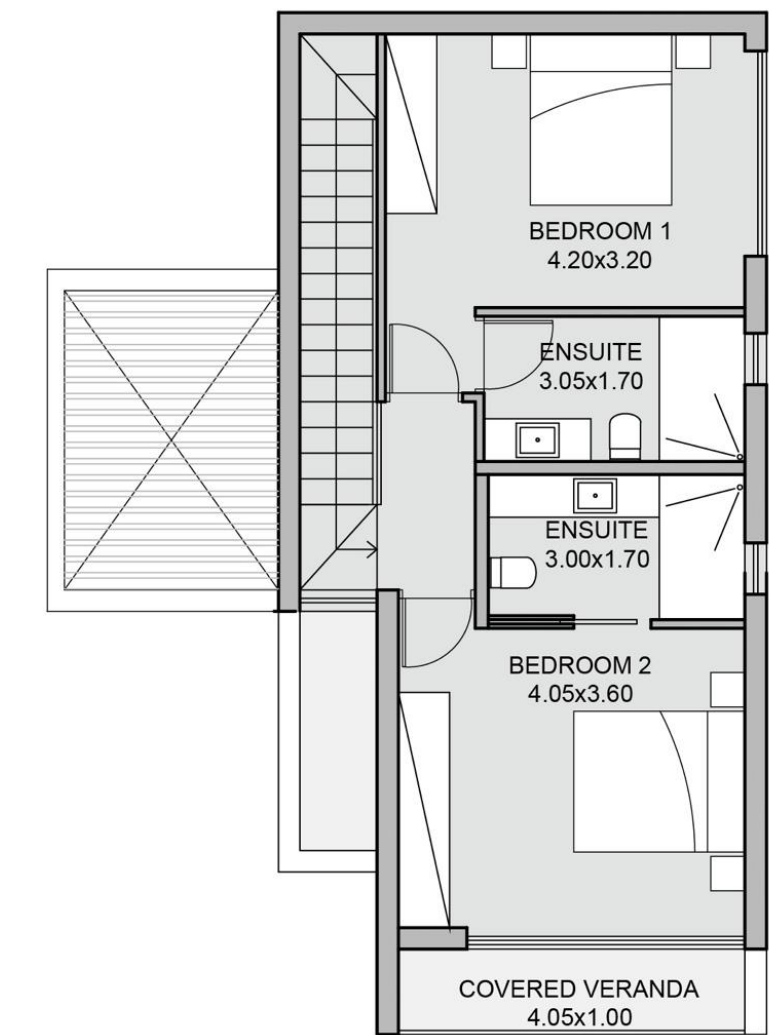
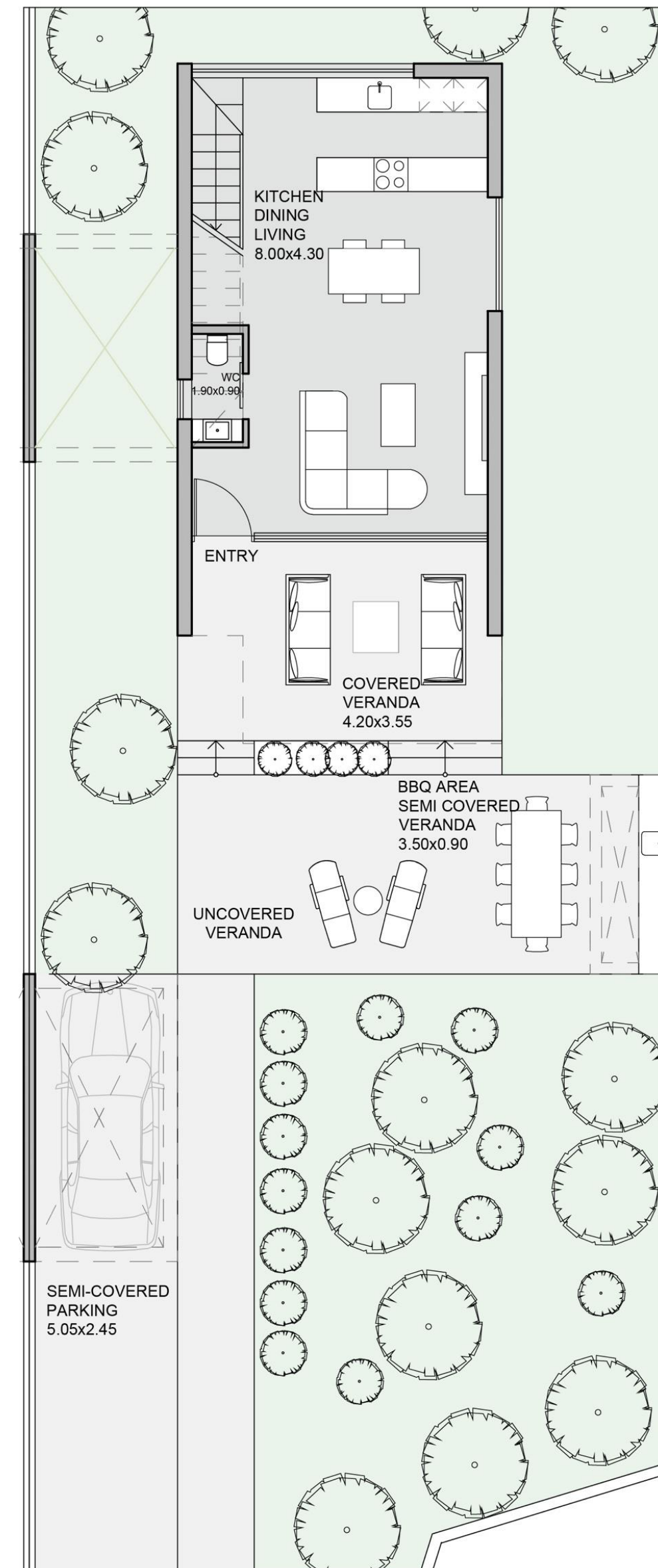
First floor



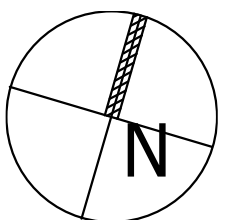
FLOOR PLAN

Villa V2.2 | 2 Bedrooms | 129sqm

Ground floor



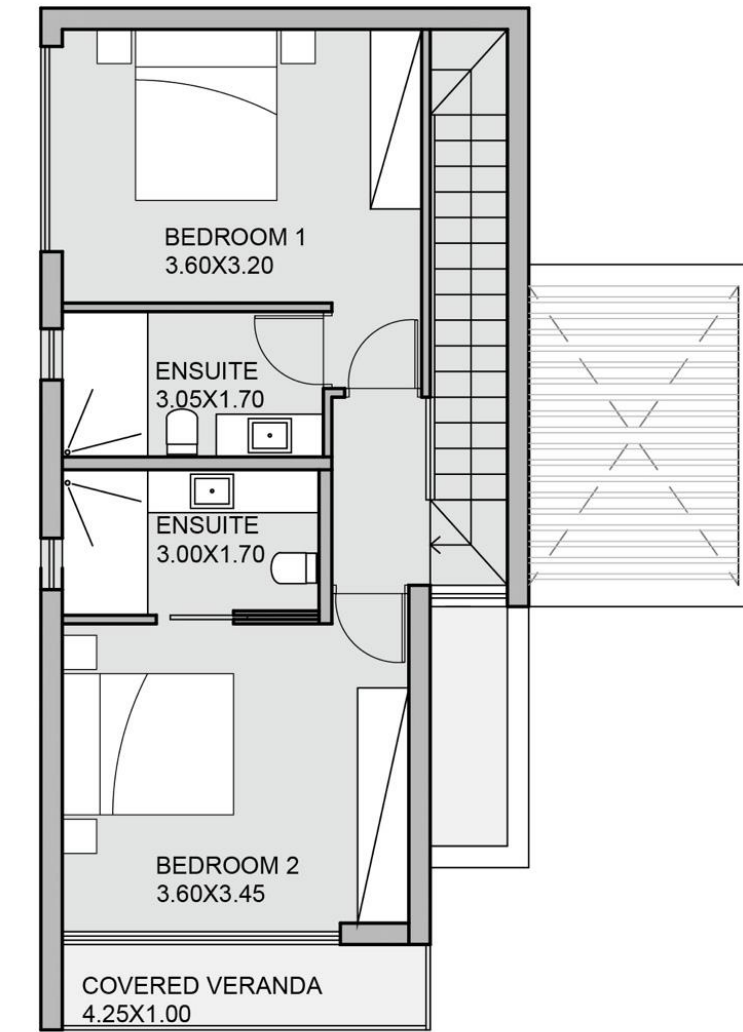
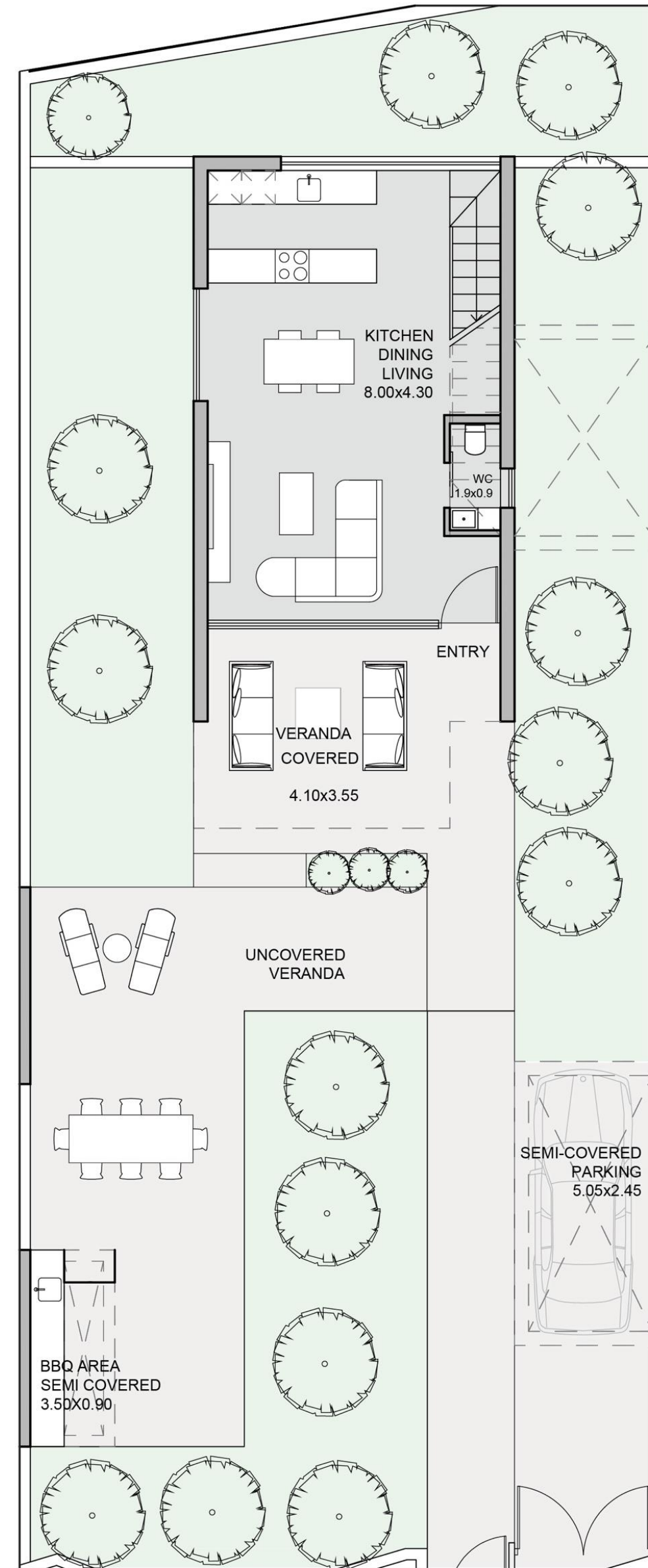
First floor



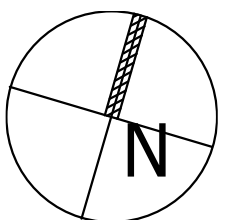
FLOOR PLAN

Villa V2.3 | 2 Bedrooms | 129sqm

Ground floor



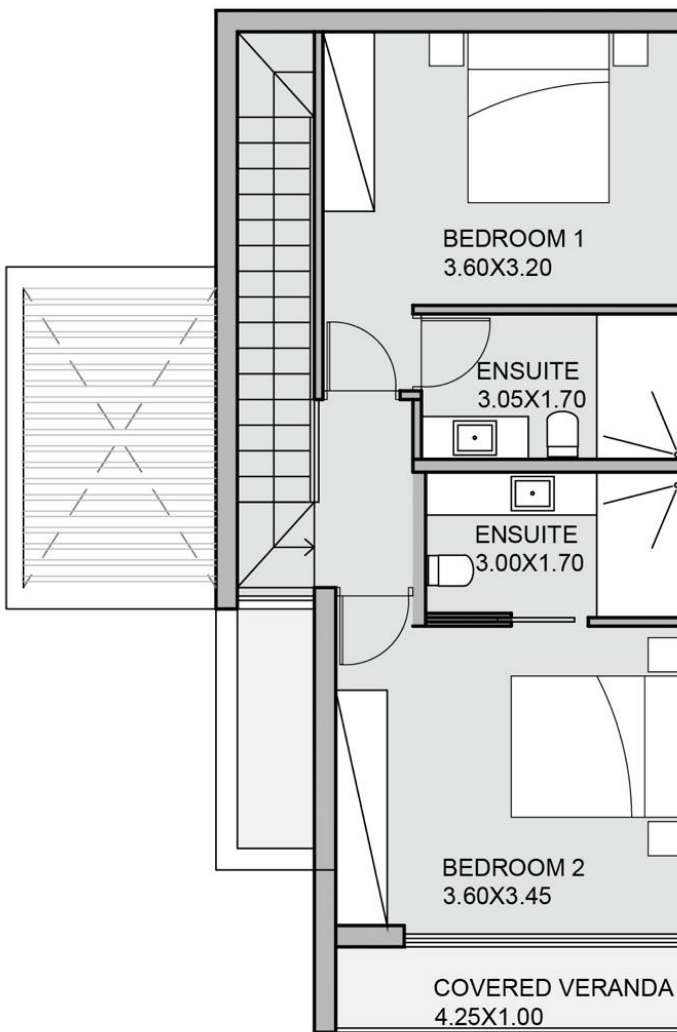
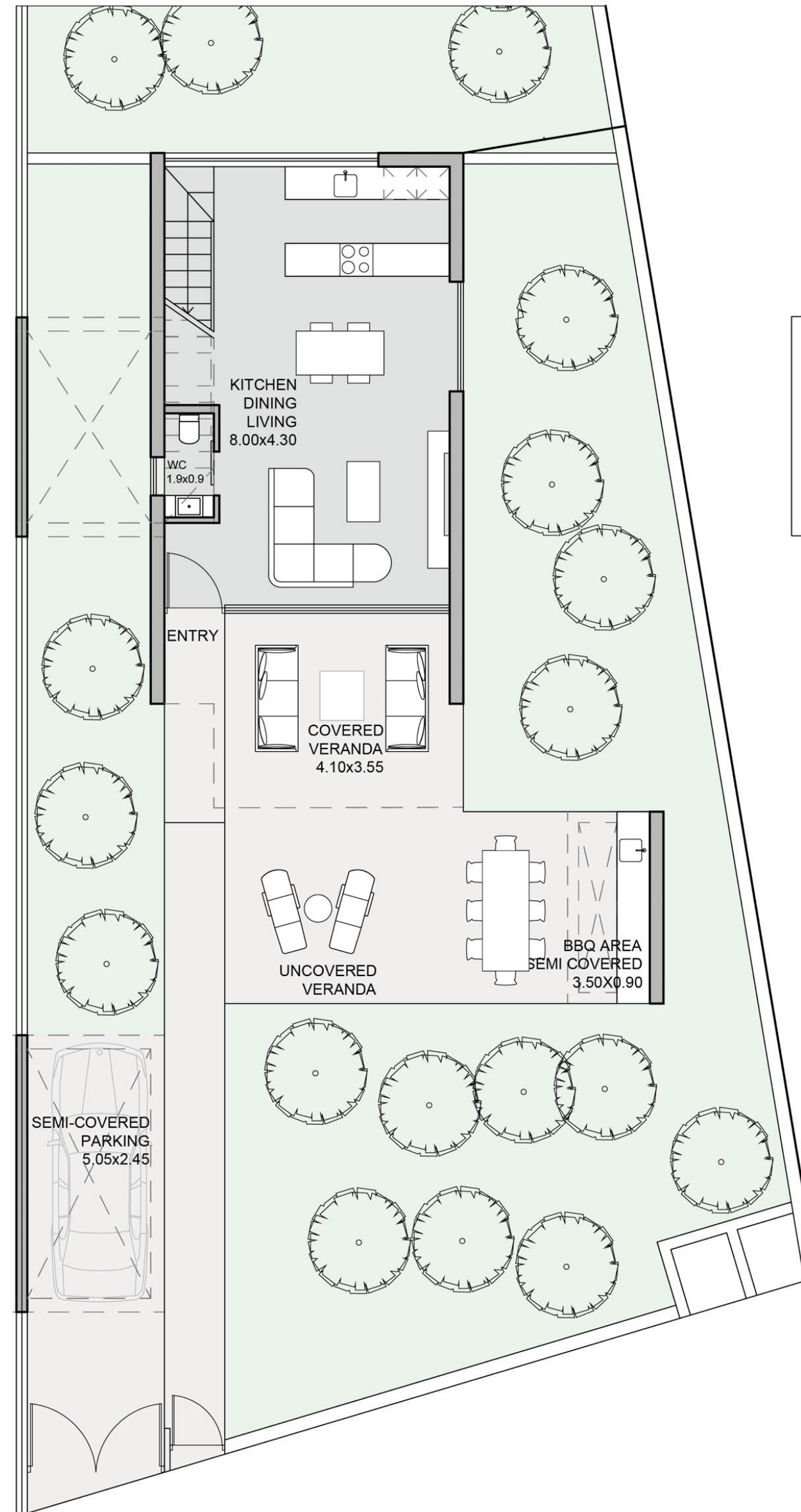
First floor



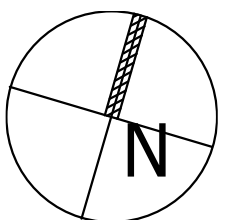
FLOOR PLAN

Villa V2.4 | 2 Bedrooms | 129sqm

Ground floor



First floor



VILLAS
V2 | 5-7



VILLAS
V2 | 5-7



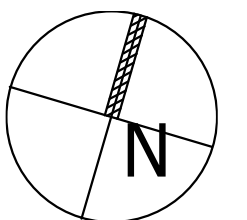
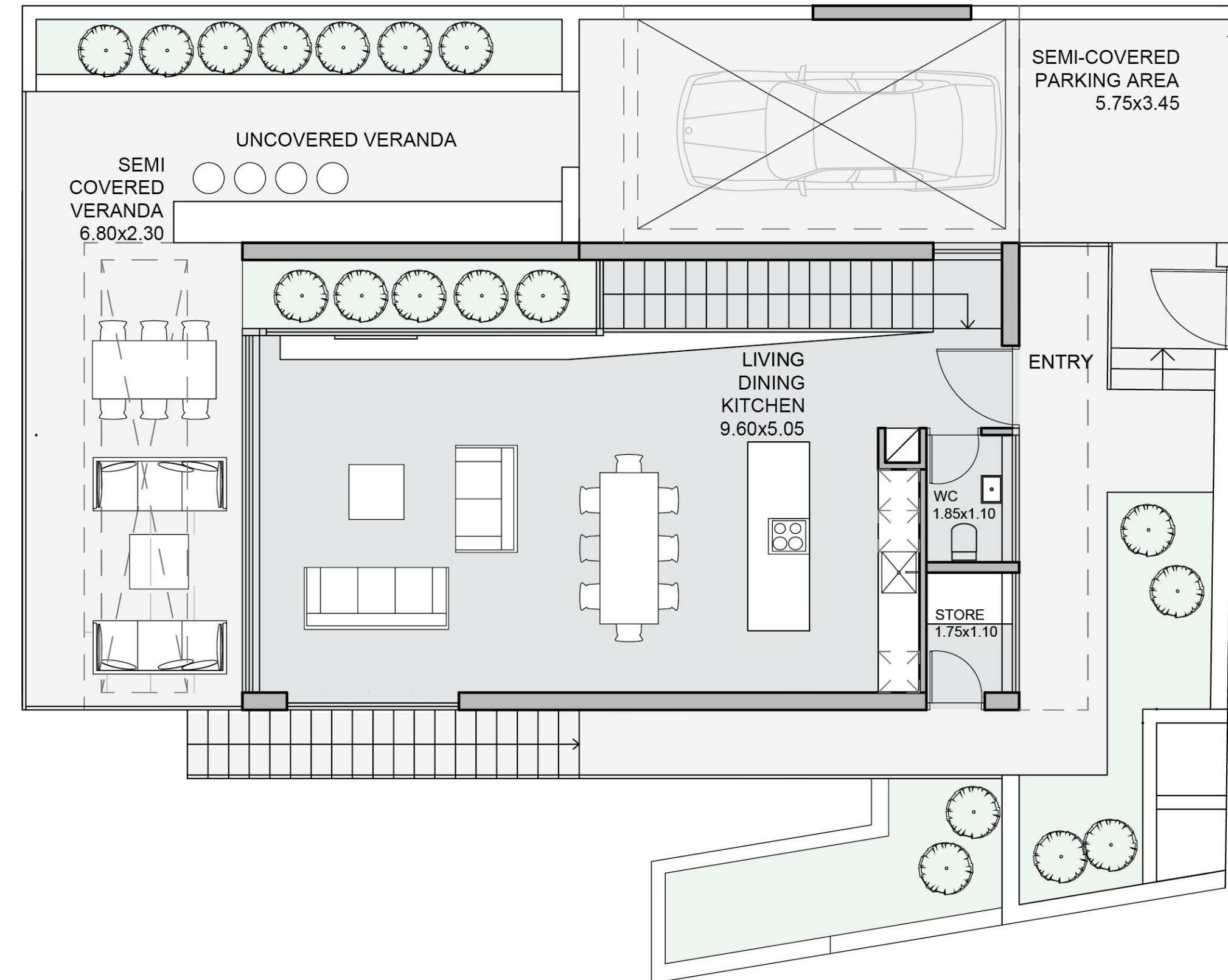
VILLAS
V2 | 5-7



FLOOR PLAN

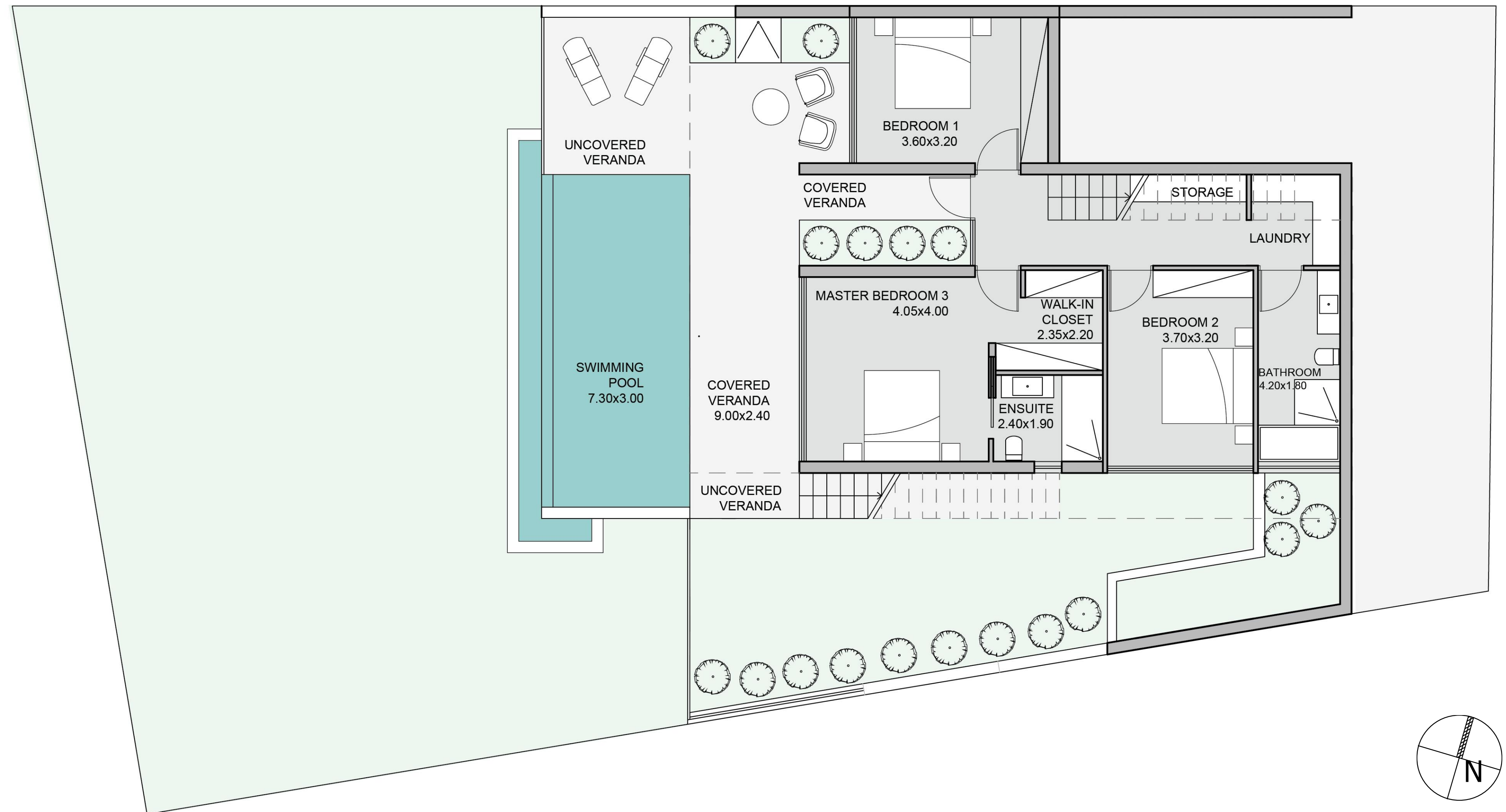
Villa V2.5 | 3 Bedroom | 197sqm

First floor

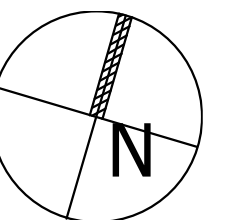


FLOOR PLAN

Villa V2.5 | 3 Bedroom | 197sqm



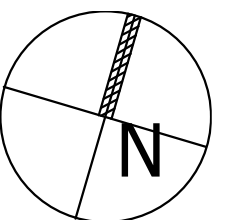
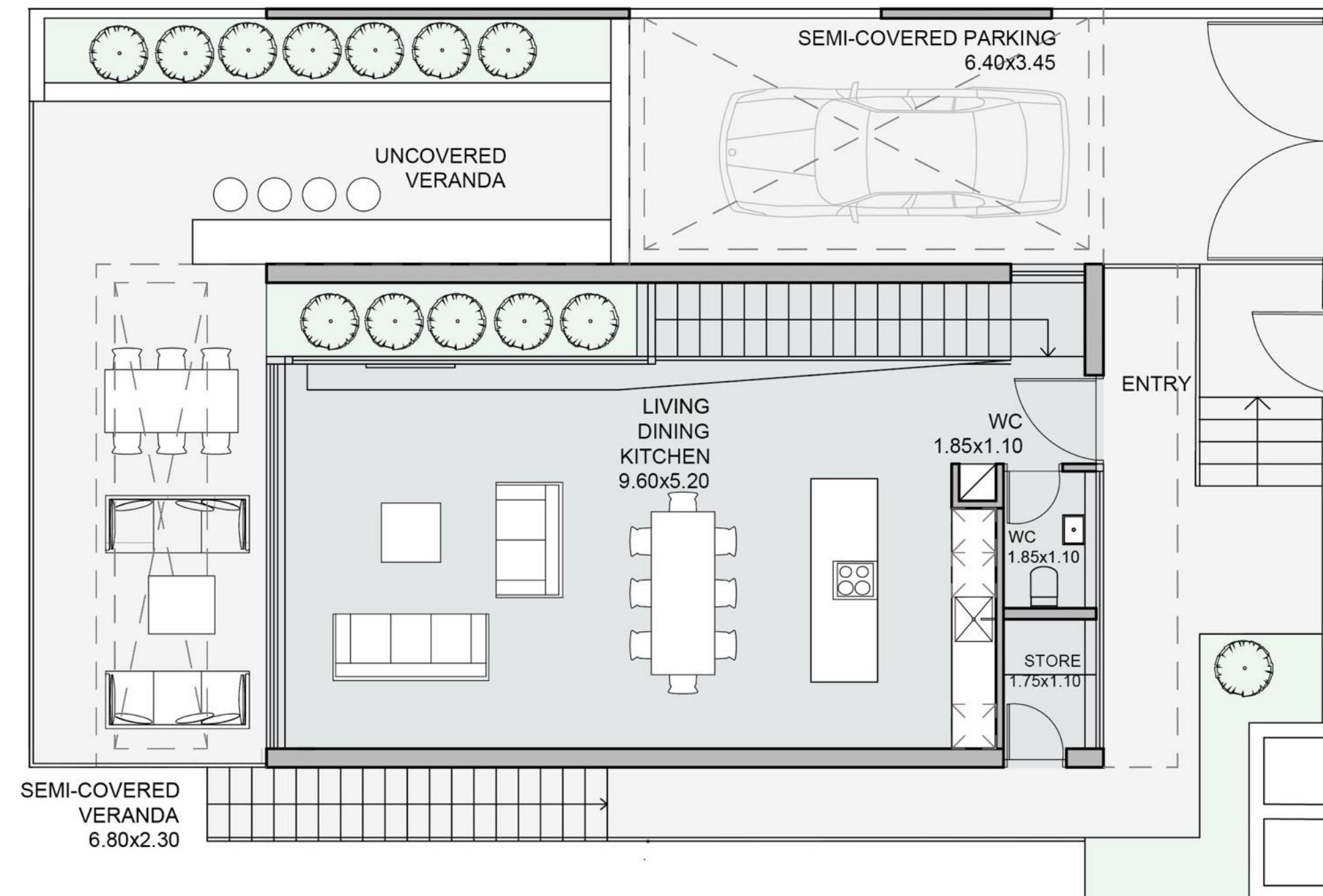
Ground floor



FLOOR PLAN

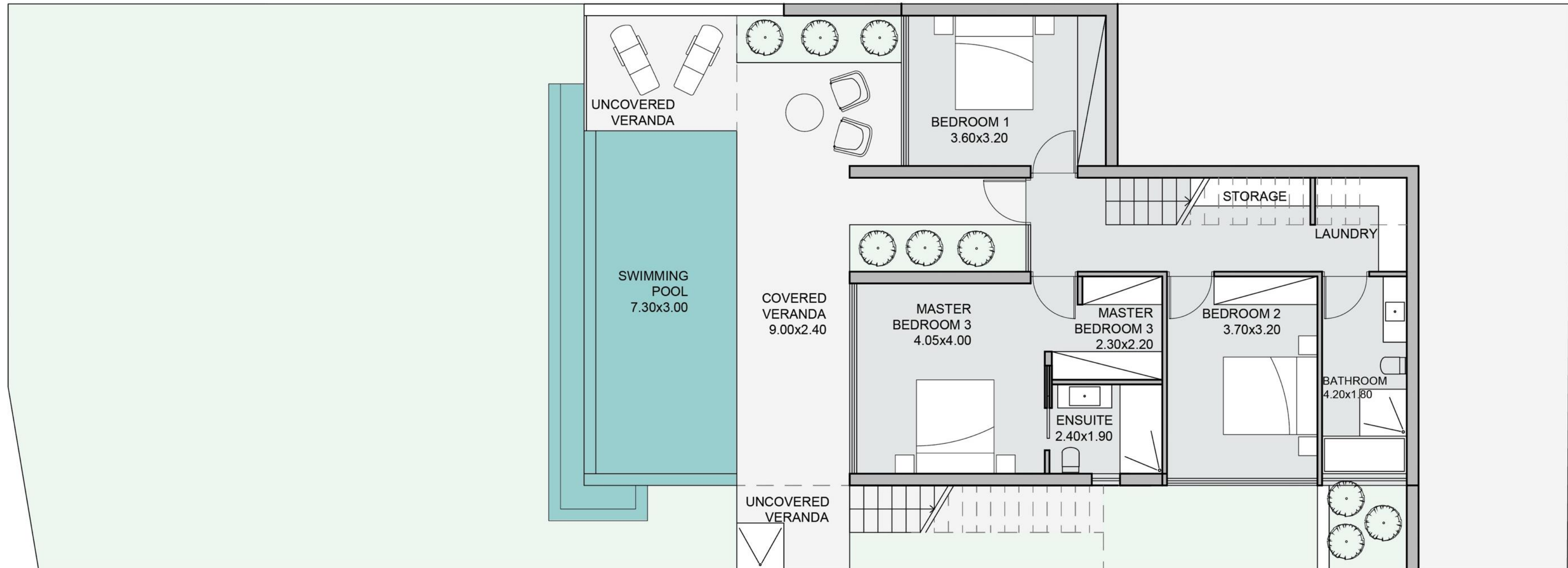
Villa V2.6 | 3 Bedroom | 197sqm

First floor

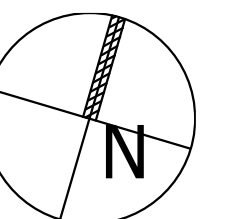


FLOOR PLAN

Villa V2.6 | 3 Bedroom | 197sqm

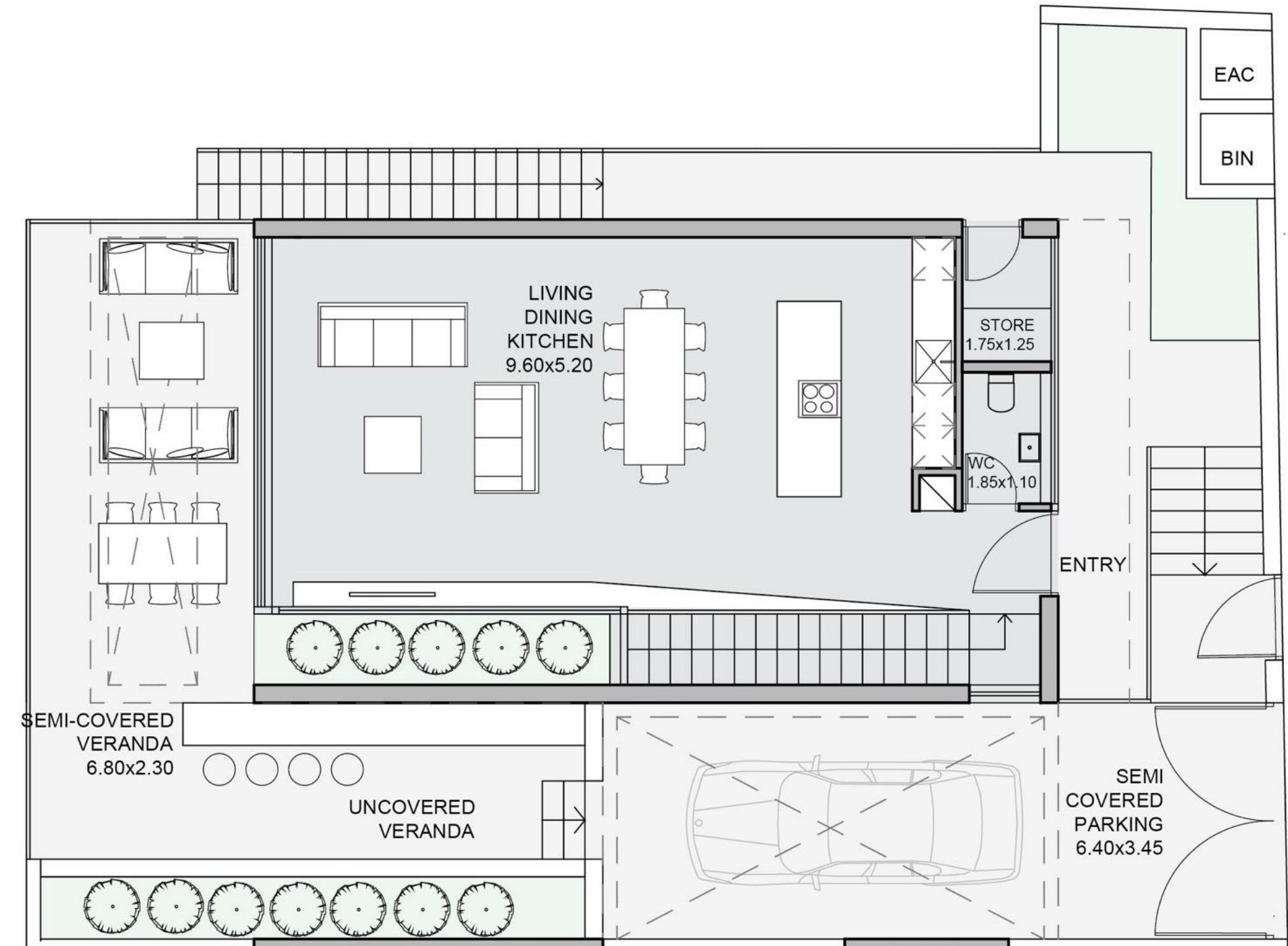


Ground floor

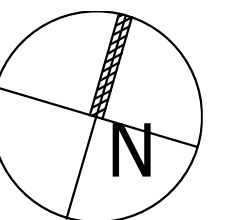


FLOOR PLAN

Villa V2.7 | 3 Bedroom | 197sqm

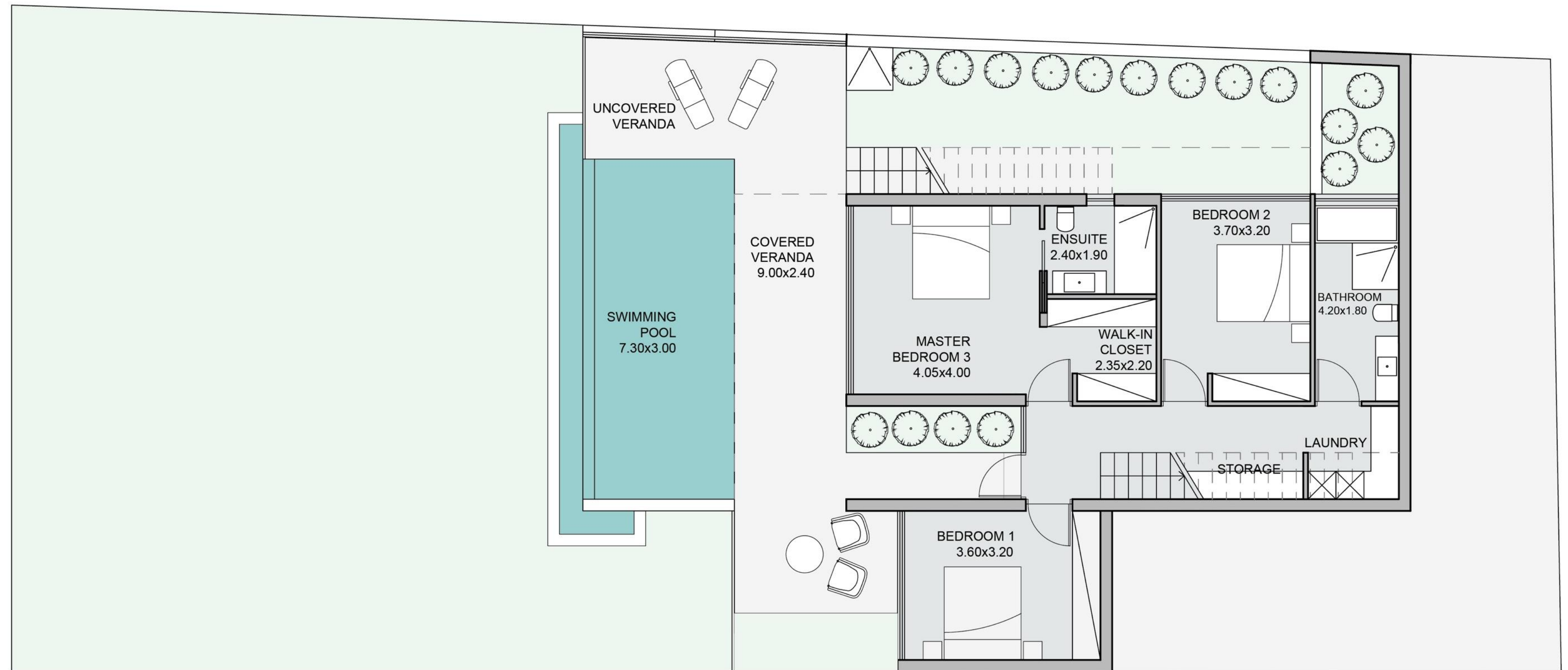


First floor

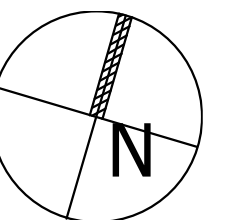


FLOOR PLAN

Villa V2.7 | 3 Bedroom | 197sqm



Ground floor



TOWNHOUSES

M1 | 1-6



TOWNHOUSES

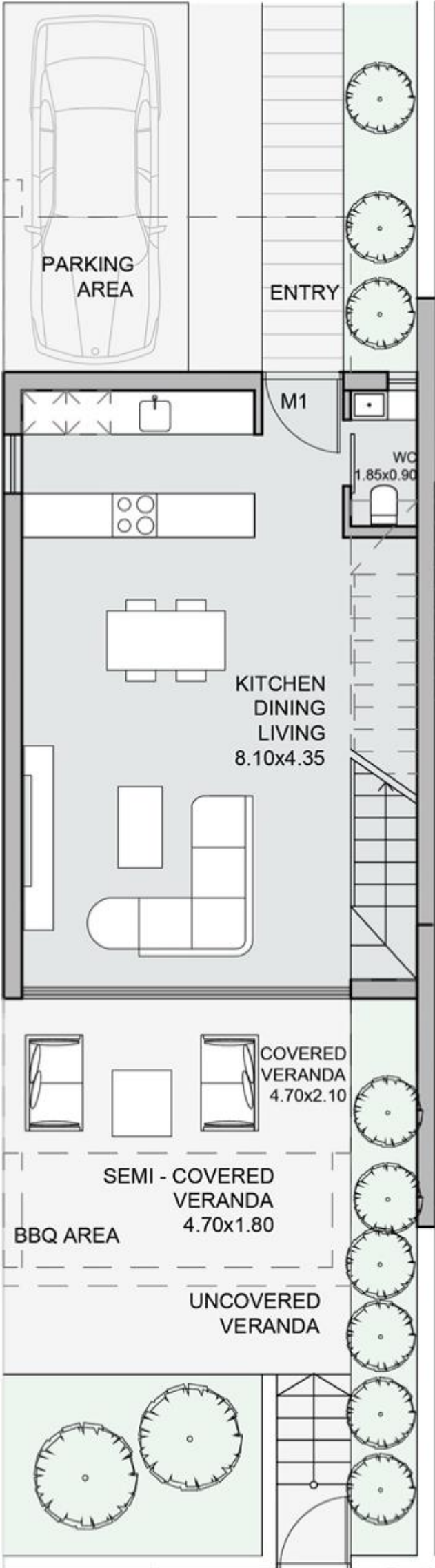
M1 | 1-6



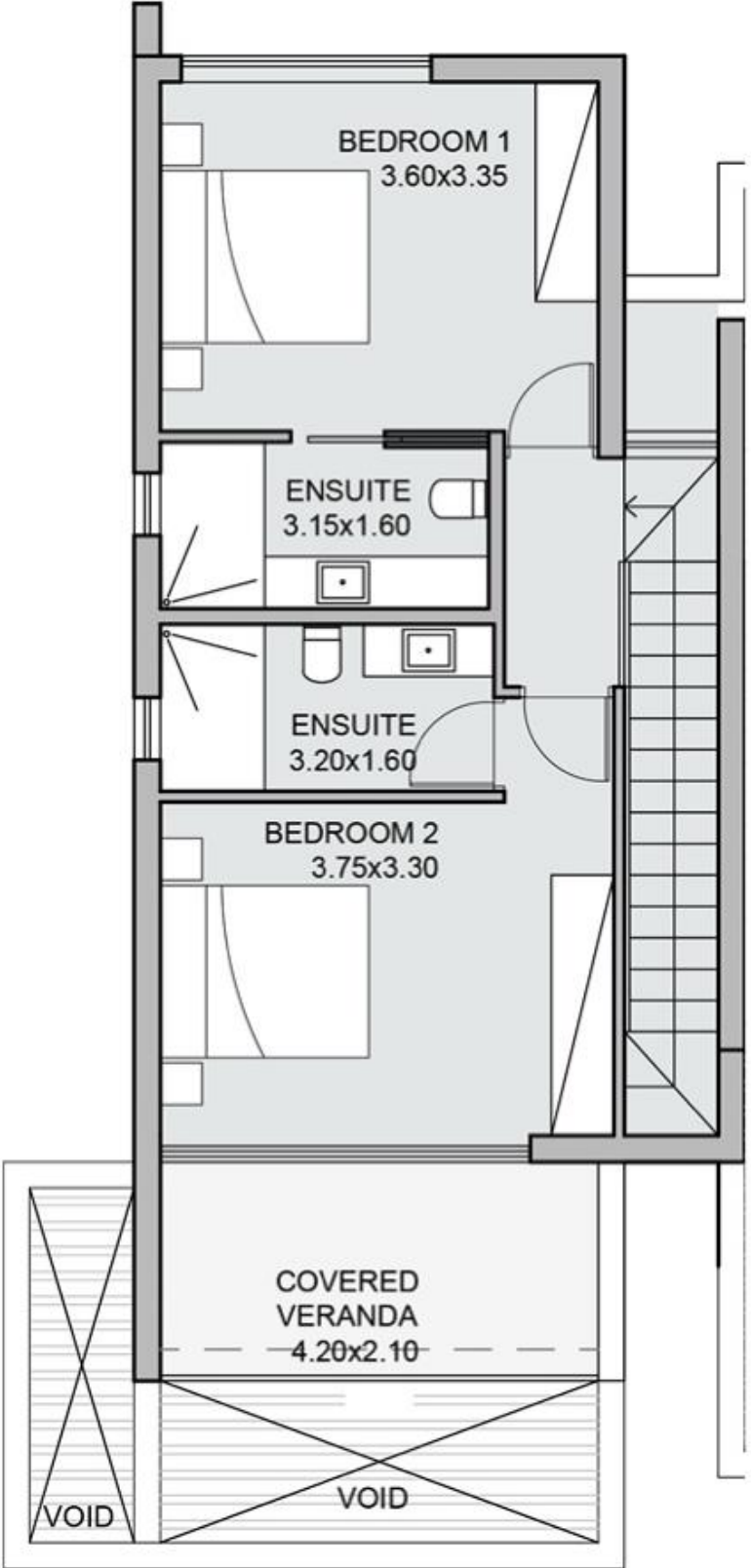
FLOOR PLAN

Townhouse M1 1-6 | 2 Bedrooms

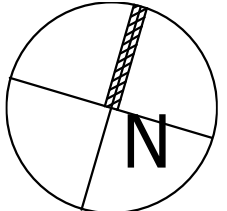
124-126sqm



Ground floor



First floor



CONTEMPORARY FINISHES

Our contemporary finishes combine natural materials including wood, marble and stone with high quality internal fixtures and fittings and premium brands. All homes include underfloor heating and concealed VRV heating and cooling system, ensuring a timeless and contemporary aesthetic to the interiors.



Example image for reference only.

LIMASSOL

THE CITY OF CHOICE

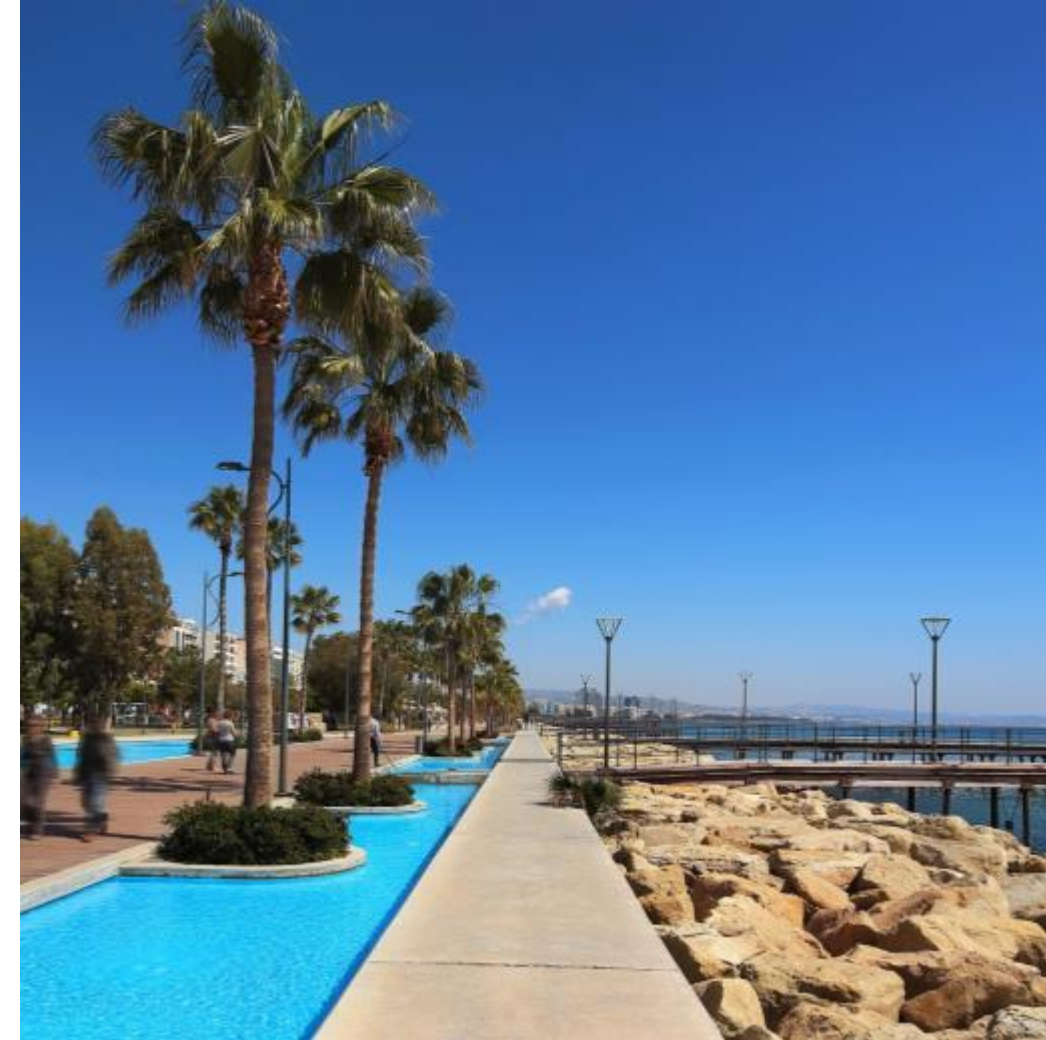
Limassol is Cyprus' cosmopolitan capital, its most important business district and a vibrant modern playground. It is consistently ranked as one of the world's leading cities for quality of life. Nowhere in Cyprus is there a richer mix of modern culture and fascinating heritage.





VIBRANT LIMASSOL

The city offers an active, vibrant and varied choice of restaurants, stylish cafes, bars and chic lounges.



Limassol's enchanting promenade is situated on the prime seafront boulevard. It is the ideal place for walking, jogging, spending time on the beach or taking time for peaceful contemplation under the shade of a mature palm tree.



LEISURE

A year-round programme of major international events.

Fine-art galleries, historic sites, museums and theatres.



LIFESTYLE

Limassol is an important maritime centre, a popular cruise destination and a private yachting hub.



ALIVE WITH HISTORY

It has a charming medieval quarter, beautiful Byzantine castle and attractive Colonial era architecture.

AN ADVENTURE IN TASTE

Limassol's gastronomic scene comprises a delicious mix of fine and casual dining. It offers a great selection of cuisines as well as local traditional food.

Waterfront dining at Limassol Marina offers a mouth-watering range of local and international cuisine, a choice of restaurants, cafes, wine, cigar and lounge bars.



PRIVATE SCHOOLS

There are a number of private schools (Greek, English, French, and Russian) available in Limassol.





LUXURY SHOPPING

Limassol's shopping is refined. An abundance of global luxury brands serve the exquisite tastes of the town's stylish residents and visitors.



enscape
LIMASSOL

The contents and information contained in this brochure are intended for general marketing purposes only and must not be construed as advice, or being complete and accurate nor be relied upon as such. The photographs of the surrounding views and location may have been digitally enhanced or altered and do not represent actual views or surrounding views. These photographs are indicative only. Fittings and finishes are subject to availability and company's discretion. Prospective purchasers should make and must rely on their own enquiries. This brochure is a guide only and does not constitute an offer or contract. Neither the company nor any of its directors or employees give any representation or warranty as to the reliability of the information contained herein, and shall not be responsible and disclaim all loss, liability or expense of any nature whatsoever which may be attributable (directly, indirectly or consequentially) to the use of the information provided.