



ILISÓ

SUITES - ATHENS



A STYLISH HOME IN ATHENS, GREECE

- Iliso Suites is a VAT-free project, enabling a saving of 24% (until end of 2024)
- Eligible for EU Permanent Residency, for your entire family
- Visa Free Travel to Europe
- Prices from € 403.000
- 56, 2-Bedroom Apartments on the Athens Riviera
- 6km from city centre
- The Athens Riviera is currently undergoing a €10Bln upgrade which includes marinas, parks, hotels, casinos and much more...





Piraeus port
🚗 15 min



Piraeus International School
🚗 12 min



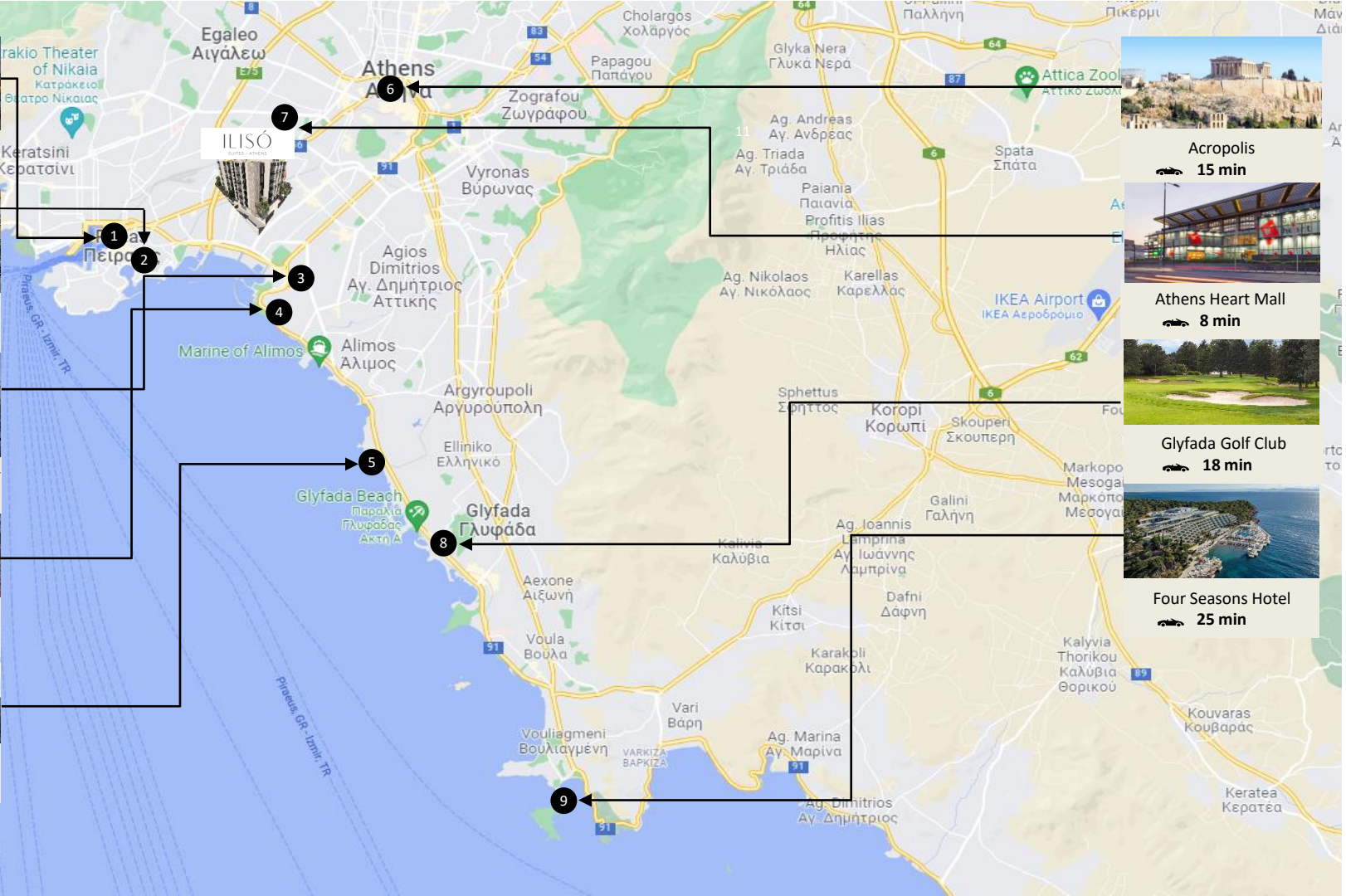
Stavros Niachos cultural center
🚗 9 min



Flisvos Marina
🚗 12 min



Hellenikon Project
🚗 15 min



Acropolis
🚗 15 min



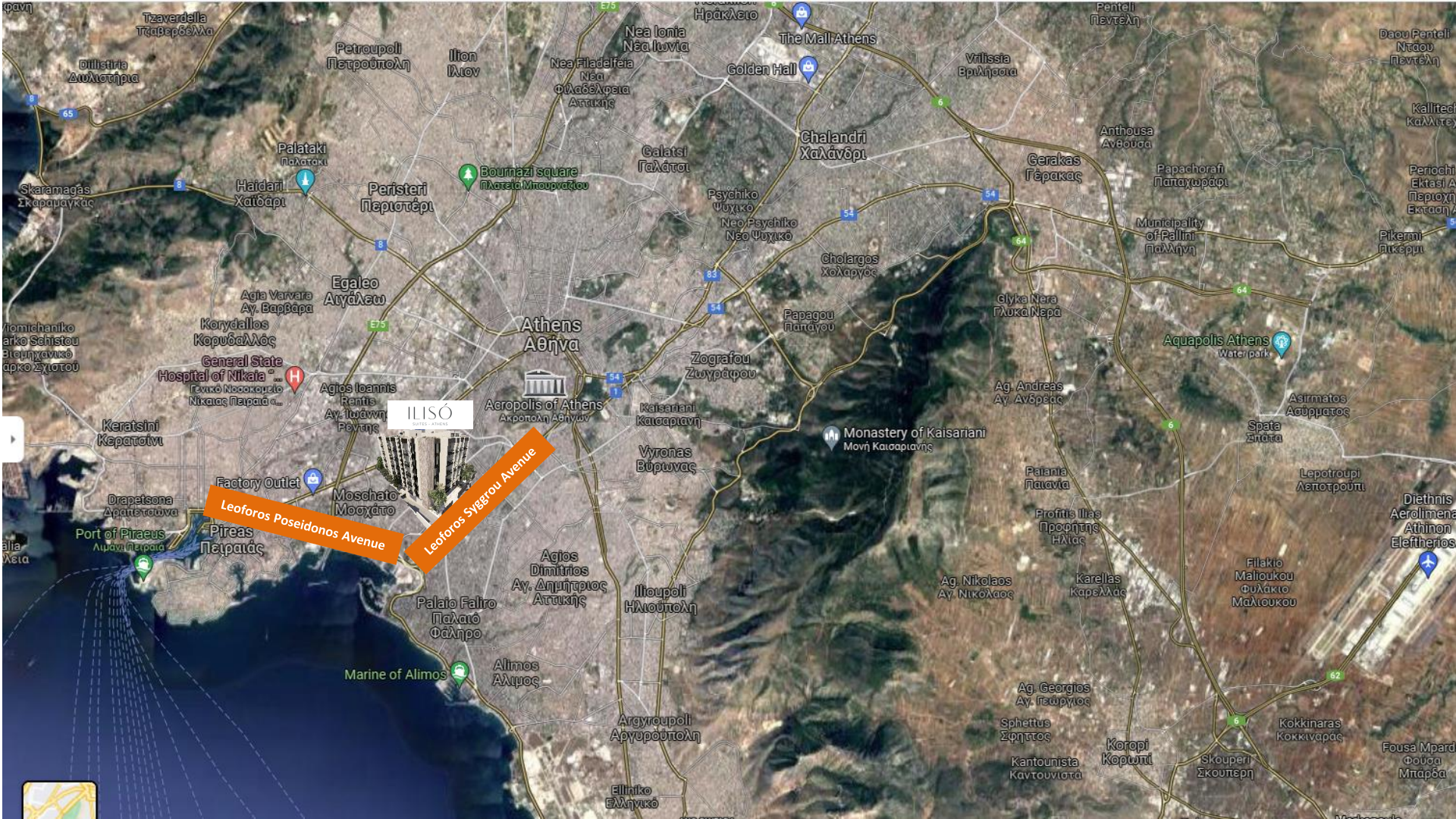
Athens Heart Mall
🚗 8 min



Glyfada Golf Club
🚗 18 min



Four Seasons Hotel
🚗 25 min



Leoforos Poseidonou Avenue

Leoforos Syggrou Avenue

ILISÓ
GREECE - ATHENS

Athens
Αθήνα

Acropolis of Athens
Ακρόπολη Αθηνών

General State Hospital of Nikita
Γενικό Νοσοκομείο Νίκιτας Πειραιά

Moschato
Μοσχάτο

Piraeus
Πειραιάς

Marine of Alimos
Αλμυρός

Kaisariani
Καισαριανή

Vyronas
Βύρωνα

Agios Dimitrios
Αγ. Δημήτριος Αττικής

Hlioupoli
Ηλιούπολη

Argyroupoli
Αργυρούπολη

Elliniko
Ελληνικό

Monastery of Kaisariani
Μονή Καισαριανής

Ag. Nikolaos
Αγ. Νικόλαος

Ag. Georgios
Αγ. Γεωργιος

Karellas
Καρέλλας

Ag. Nikolaos
Αγ. Νικόλαος

Sphettus
Σφηττός

Kantounista
Καντωνιστά

Aquapolis Athens
Water park

Sparta
Σπάρτα

Lepotroupi
Λεποτρούπι

Filakio Malioukou
Φυλάκιο Μαλιούκου

Kokkinaras
Κοκκινάρας

Skouperri
Σκουπερή

Kokkinaras
Κοκκινάρας

Fousa Mpar
Φούσα Μπαρδά

Diethnis Aerolimen
Αθηνών
Ελευθερίου

Fousa Mpar
Φούσα Μπαρδά

Kokkinaras
Κοκκινάρας

Skouperri
Σκουπερή

Kokkinaras
Κοκκινάρας

Fousa Mpar
Φούσα Μπαρδά



Flisvos Marina – 5km

Stavros Niarchos Cultural Center – 3km

Tram Station – 1.3km

New Marina – 3km

Eurobank – 1.1km

Train Station – 1km

Alpha Bank – 1km

Green Area –
Pedestrian road – 50m

Public school – 250m

Indoor Sports Hall – 350m

Pharmacy – 200m

ILISÓ
SUITES - ATHENS

MOSCHATO AREA

- One of the most vibrant suburbs of Athens
- Equal distance to the centre of Athens and the port of Piraeus
- Metro and tram stations
- New Marina to be completed at the end of 2025
- An area with the most pedestrian streets in Athens
- Easy access to all the main streets of Athens





ATHENS METRO MAP

- ILISO to Piraeus 6 minutes
- ILISO to Athens City centre 17 minutes
- ILISO to Faliro 3 minutes
- ILISO to Monastiraki 10 minutes
- ILISO to Athens Airport 53 minutes
- ILISO to Alimos 32 minutes
- ILISO to The Athens Concert Hall 20 minutes

ILISÓ
RESIDENCES

Metro Station 9 minutes on foot from ILISO Suites



FRONT FACADE





ILISO SUITES

Main Entrance

BACK FACADE





ILISO SUITES

Staircase Facade



SAMPLE LIVING ROOM



SAMPLE LIVING ROOM





SAMPLE KITCHEN



SAMPLE MASTER BEDROOM





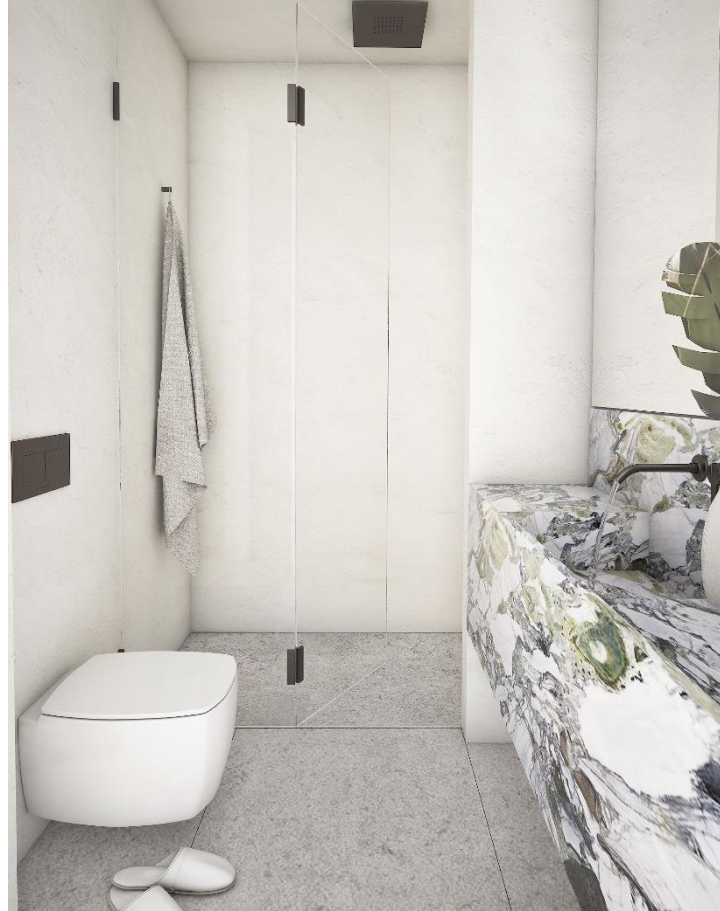
SAMPLE BEDROOM

SAMPLE BEDROOM ROOF LOFT

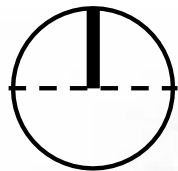




SAMPLE ENSUITE BATHROOM



SAMPLE BATHROOM



Land area | 2193.48 sqm.





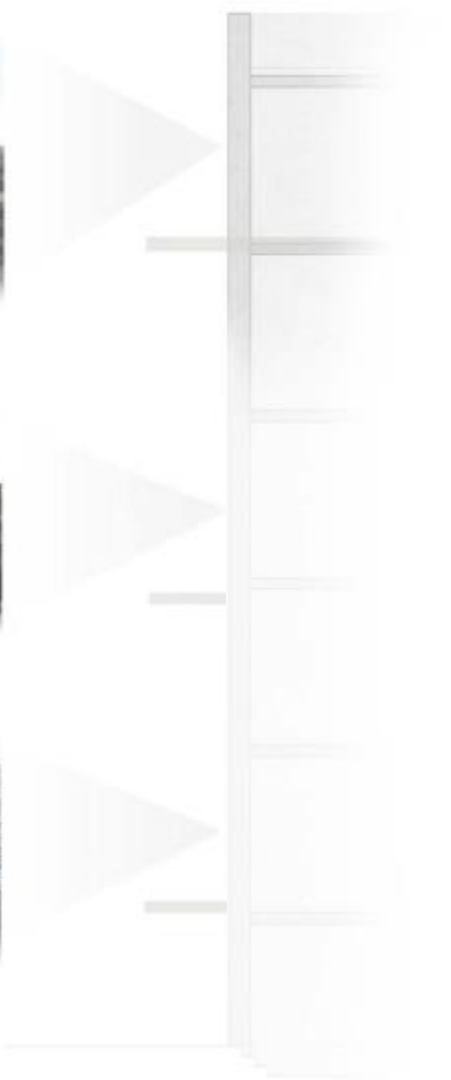
LEVEL 5 - VIEWS



LEVEL 3 - VIEWS



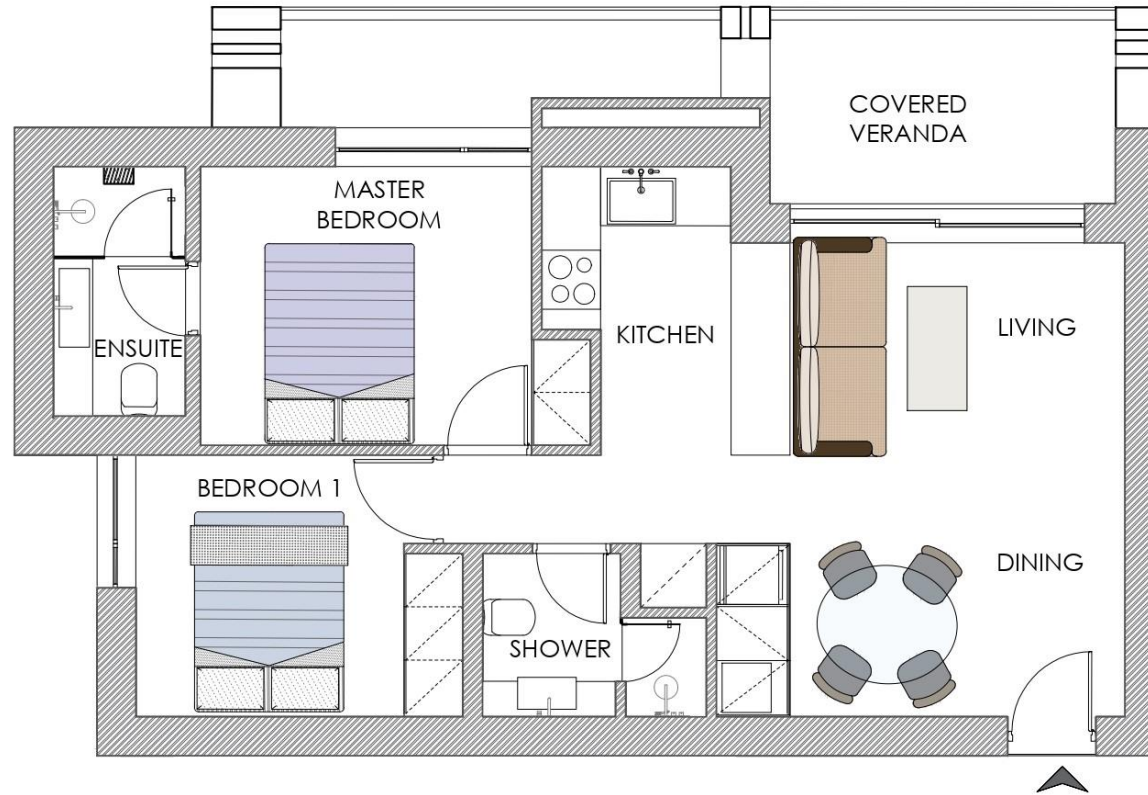
LEVEL 1 - VIEWS



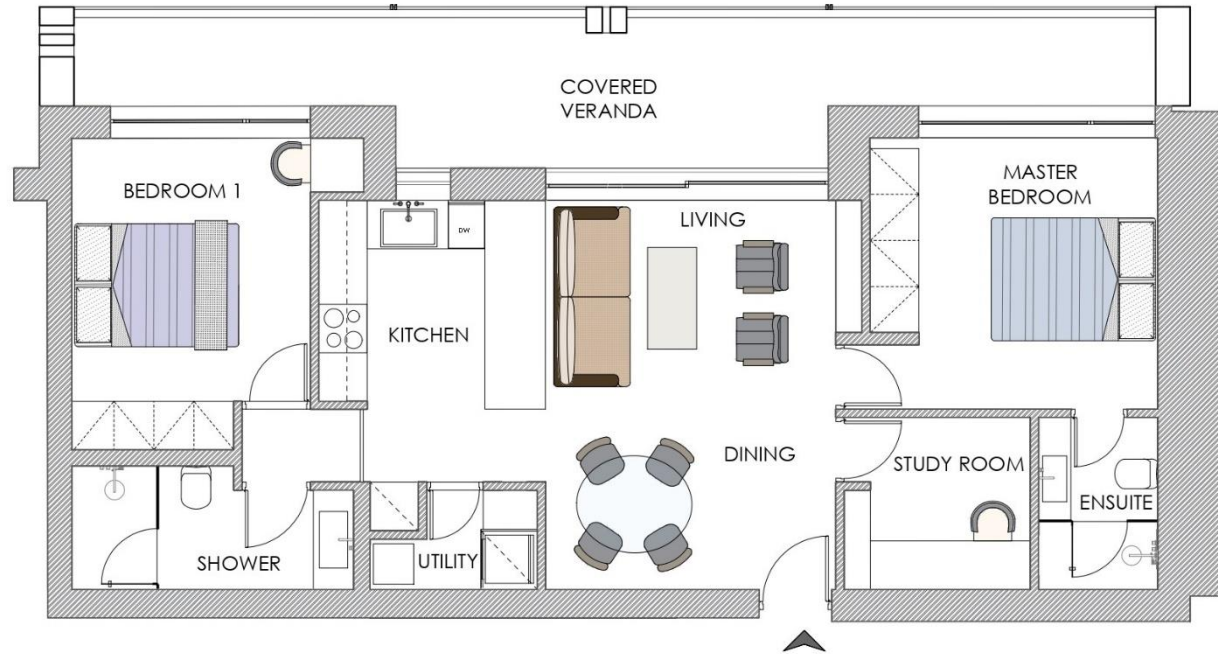
APARTMENT TYPES

	Units
Type A - 2 bed apartment 65-70 sqm. verandas 8-20 sqm.	22
Type B - 2 bed apartment 82-85 sqm. verandas 12-22 sqm.	11
Type C - 2 bed apartment 84 sqm. verandas 23 sqm.	4
Type D - 2 bed apartment 61-73 sqm. verandas 14-17 sqm.	14
Type E - 2 bed duplex 64-74 sqm. verandas 8-11 sqm.	5
Total units	56

TYPE A



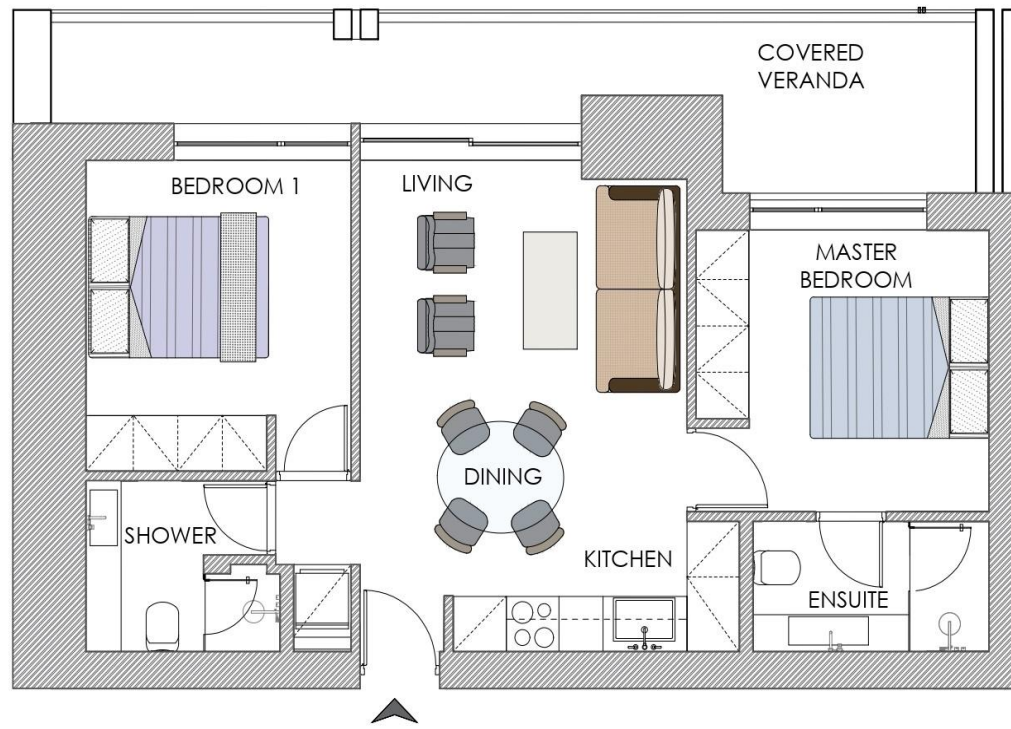
TYPE B



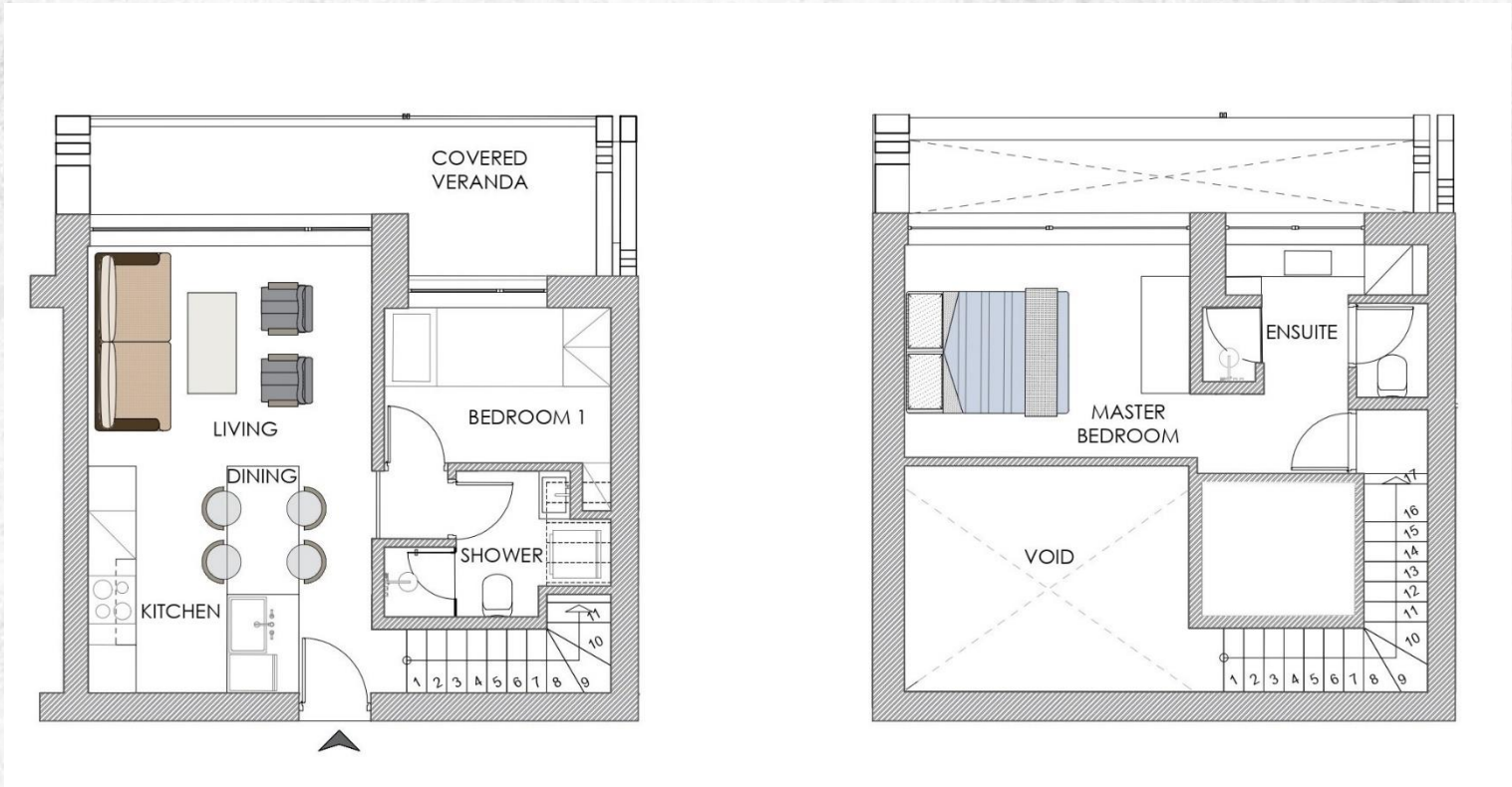
TYPE C



TYPE D



TYPE E





SITE PLAN | GF

private gardens

ground floor apartments w/ gardens

27 parking spaces



main entrance

BASEMENT

basement
32 parking spaces

car ramp entrance



FIRST FLOOR





SECOND FLOOR



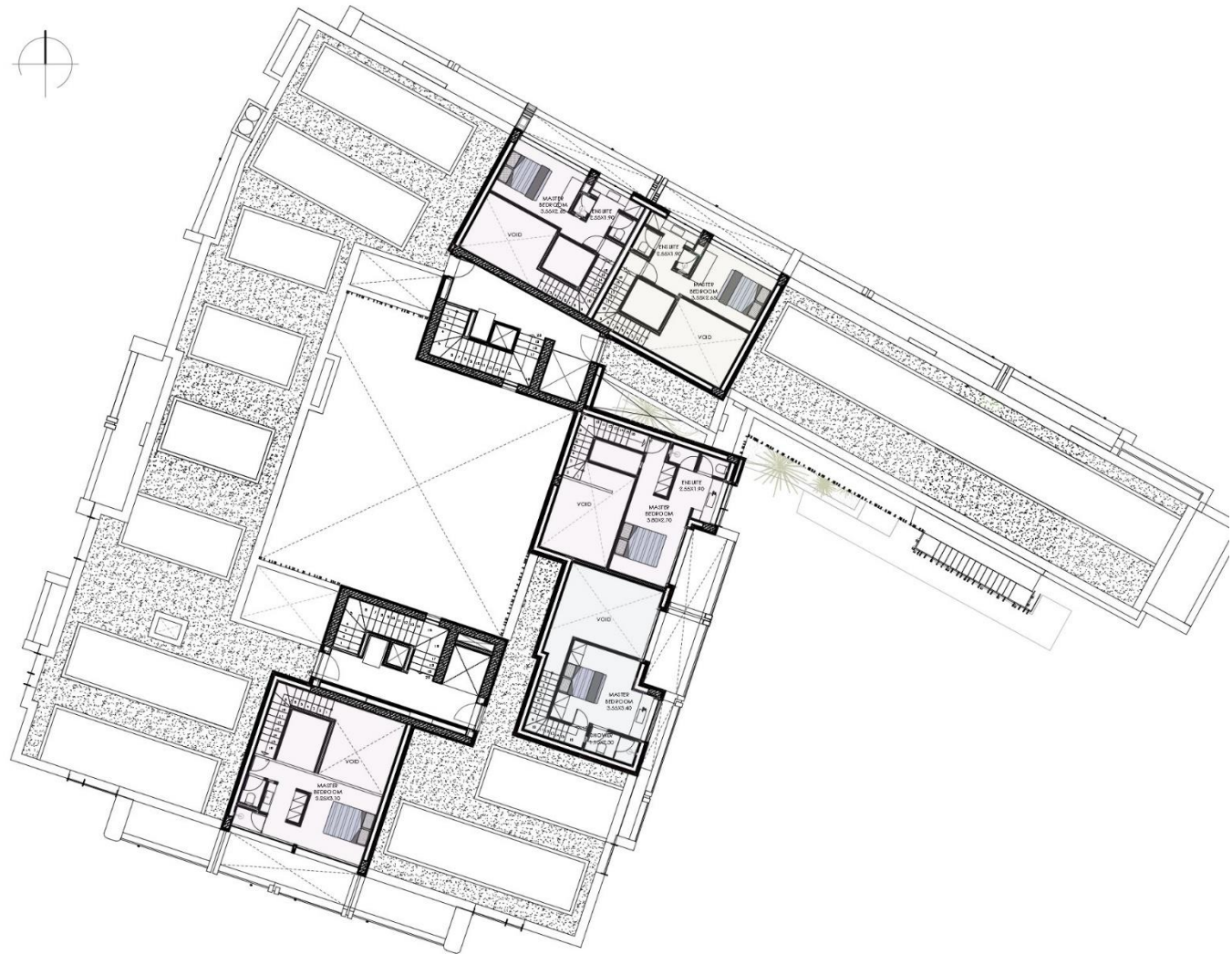
FORTH FLOOR



FIFTH FLOOR



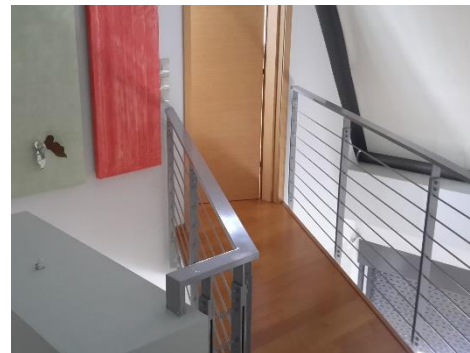
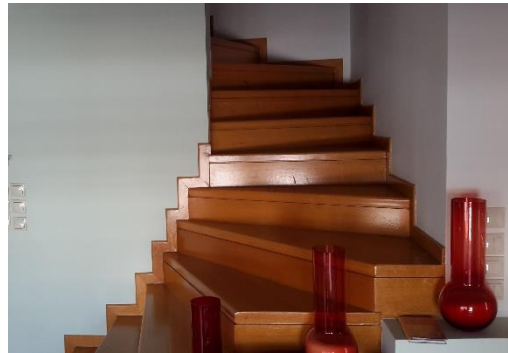
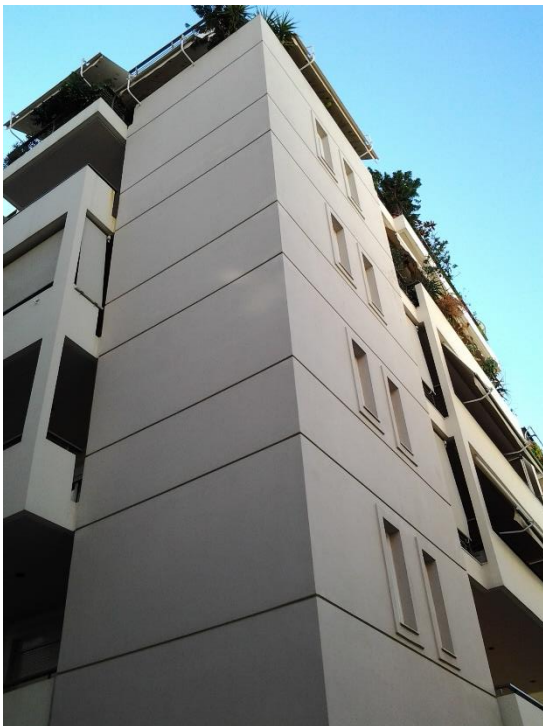
ROOF FLOOR



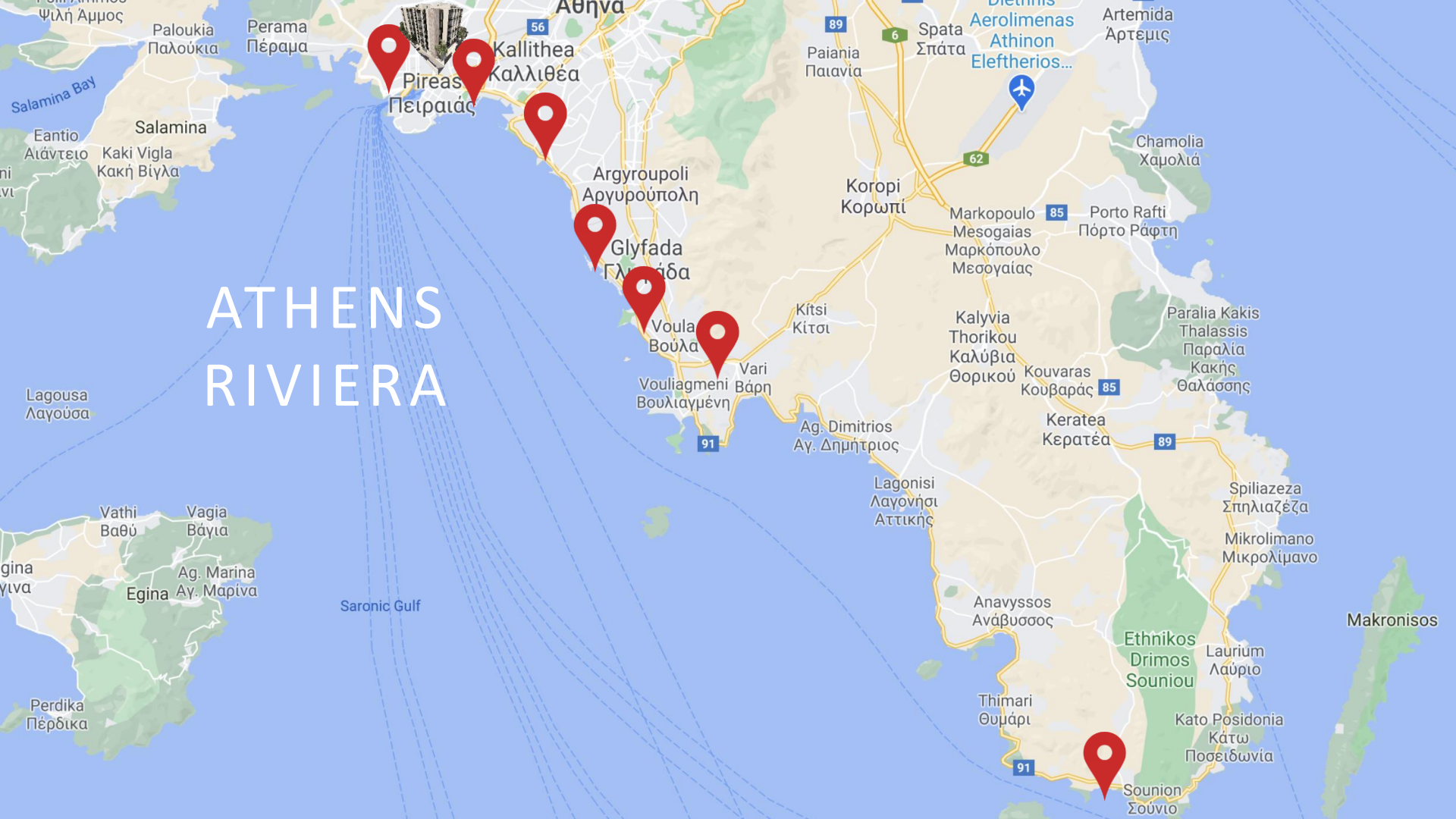
Completed project:
Almyrida



Completed project:
Kypseli



ATHENS RIVIERA



‘ATHENS RIVIERA’
is going through a major transformation that will
redefine the city’s relationship with the sea.

The reconstruction of the wider Athens coastal front, or “Athens Riviera”, is on track based on four pillars that will transform the area into a luxury seaside front. The reconstructed coastal front will host several international luxury hotel and resort chains, such as One & Only, Ritz-Carlton, Four Seasons, Waldorf Astoria, Fairmont Hotels & Resorts, Mandarin Oriental and Autograph Collection.

The four pillars of the reconstruction project are the areas of the Asteras of Vouliagmeni, the Stars of Glyfada, the Hellinikon project and the Faliro Bay. The project will benefit not only the residents of the seaside neighbourhoods but the Greek economy overall.



ASTERAS OF VOULIAGMENI



STARS OF GLYFADA



HELLINIKON PROJECT



FALIRO BAY



STAVROS NIACHOS FOUNDATION CULTURAL CENTER

- World class cultural, educational, and recreational urban complex
- Includes the National Library of Greece and the Greek National Opera
- A park of 210.000 sqm
- Completed on 2017
- Total cost of 630 million euros
- Distance from Iliso Suites 7 mins – 3km



GLYFADA

- One of the most elegant districts of Athens
- Chic coffee shops, elegant restaurants
- Shopping destination
- Distance from Iliso Suites 20 mins



VOULIAGMENI

- Four Seasons hotel of Athens
- Michelin star restaurants
- The most beautiful beaches in Attica region
- Also known as the Greek 'Monaco'
- Distance from Iliso Suites 25 mins



PIRAEUS

- The biggest port of Europe, one of the biggest of the world
- Daily connection with the Greek Islands
- Restaurants, coffee shops , shopping centre
- Distance from Iliso Suites 12 mins





HELLENIKON PROJECT: Can Place Athens in the 'Centre Of the World'

- With a total size of 6.2 million sqm is three times the size of Monaco, two times the size of New York's Central Park
- Europe's biggest urban regeneration project
- 5 star hotels, Casino , Metropolitan Park , Exhibition Center , Shopping Center, Aquarium
- Total Investment of €8 billion
- Distance from Iliso Suites 15 mins

THE METROPOLITAN PARK:

One of the Biggest Coastal Parks in the World

- 2,000.000 sqm park (bigger than London's Hyde Park)
- 33,000 trees
- 50 km cycling and walking route
- 1 km beach





FLISVOS MARINA

- 6,200 sqm of facilities
- Restaurants, coffee shops, open cinema
- 25,000 sqm park
- Distance from Iliso Suites 10 mins





NEW GREEN PARK AREA

- The biggest park in Athens, 500.000 m²
- New Marina , Restaurants
- Cinema, Eco friendly playgrounds
- Completion, end of 2027
- Distance from Iliso Suites 8 mins





ILISÓ

SUITES - ATHENS

The contents and information contained in this presentation is intended for general marketing purposes only and must not be construed as advice, or being complete and accurate nor be relied upon as such. The photographs of the surrounding views and location may have been digitally enhanced or altered and do not represent actual views or surrounding views. These photographs are indicative only. Fittings and finishes are subject to availability and company's discretion. Prospective purchasers should make and must rely on their own enquiries. This presentation is a guide only and does not constitute an offer or contract. Neither the company nor any of its directors or employees give any representation or warranty as to the reliability of the information contained herein, and shall not be responsible and disclaim all loss, liability or expense of any nature whatsoever which may be attributable (directly, indirectly or consequentially) to the use of the information provided.